

PARTS LIST

CAUTION

- The parts identified by the \triangle symbol are important for the safety. Whenever replacing these parts, be sure to use specified ones to secure the safety.
- The parts not indicated in this Parts List and those which are filled with lines — in the Parts No. columns will not be supplied.
- P. W. Board Ass'y will not be supplied, but those which are filled with the Parts No. in the Parts No. columns will be supplied.

ABBREVIATIONS OF RESISTORS, CAPACITORS AND TOLERANCES

RESISTORS		CAPACITORS	
C R	Carbon Resistor	C CAP.	Ceramic Capacitor
F R	Fusible Resistor	E CAP.	Electrolytic Capacitor
P R	Plate Resistor	M CAP.	Mylar Capacitor
V R	Variable Resistor	HV CAP.	High Voltage Capacitor
HV R	High Voltage Resistor	MF CAP.	Metalized Film Capacitor
MF R	Metal Film Resistor	MM CAP.	Metalized Mylar Capacitor
MG R	Metal Glazed Resistor	MP CAP.	Metalized Polystyrol Capacitor
MP R	Metal Plate Resistor	PP CAP.	Polypropylene Capacitor
OM R	Metal Oxide Film Resistor	PS CAP.	Polystyrol Capacitor
CMF R	Coating Metal Film Resistor	TF CAP.	Thin Film Capacitor
UNF R	Non-Flammable Resistor	MPP CAP.	Metalized Polypropylene Capacitor
CH V R	Chip Variable Resistor	TAN. CAP.	Tantalum Capacitor
CH MG R	Chip Metal Glazed Resistor	CH C CAP.	Chip Ceramic Capacitor
COMP. R	Composition Resistor	BP E CAP.	Bi-Polar Electrolytic Capacitor
LPTC R	Linear Positive Temperature Coefficient Resistor	CH AL E CAP.	Chip Aluminum Electrolytic Capacitor
		CH AL BP CAP.	Chip Aluminum Bi-Polar Capacitor
		CH TAN. E CAP.	Chip Tantalum Electrolytic Capacitor
		CH AL BP E CAP.	Chip Tantalum Bi-Polar Electrolytic Capacitor

TOLERANCES									
F	G	J	K	M	N	R	H	Z	P
±1%	±2%	±5%	±10%	±20%	±30%	+30% -10%	+50% -10%	+80% -20%	+100% -0%

CONTENTS

■ USING PW BOARD & REMOTE CONTROL UNIT	55
■ EXPLODED VIEW PARTS LIST	56, 58
■ EXPLODED VIEW	56, 57, 58
■ PRINTED WIRING BOARD PARTS LIST	
● MAIN PW BOARD ASS'Y	59
● POWER & DEF. PW BOARD ASS'Y	65
● R CRT SOCKET PW BOARD ASS'Y	67
● G CRT SOCKET PW BOARD ASS'Y	68
● B CRT SOCKET PW BOARD ASS'Y	68
● CONVERGENCE PW BOARD ASS'Y	69
● R VM PW BOARD ASS'Y	70
● G VM PW BOARD ASS'Y	70
● B VM PW BOARD ASS'Y	71
● REMOCON SENSOR PW BOARD ASS'Y	71
● LINE FILTER PW BOARD ASS'Y	71
● CENTER SPEAKER PW BOARD ASS'Y	71
● DEF. OSC. PW BOARD ASS'Y	72
● AV JACK PW BOARD ASS'Y	73
● FRONT CONTROL PW BOARD ASS'Y	75
● RECEIVER PW BOARD ASS'Y	75
● CONVERGENCE OSD PW BOARD ASS'Y	77
● DIGITAL INPUT MODULE PW BOARD ASS'Y	77
● I-P CONVERT MODULE PW BOARD ASS'Y	77
■ REMOTE CONTROL UNIT PARTS LIST	78
■ PACKING	78
■ PACKING PARTS LIST	78

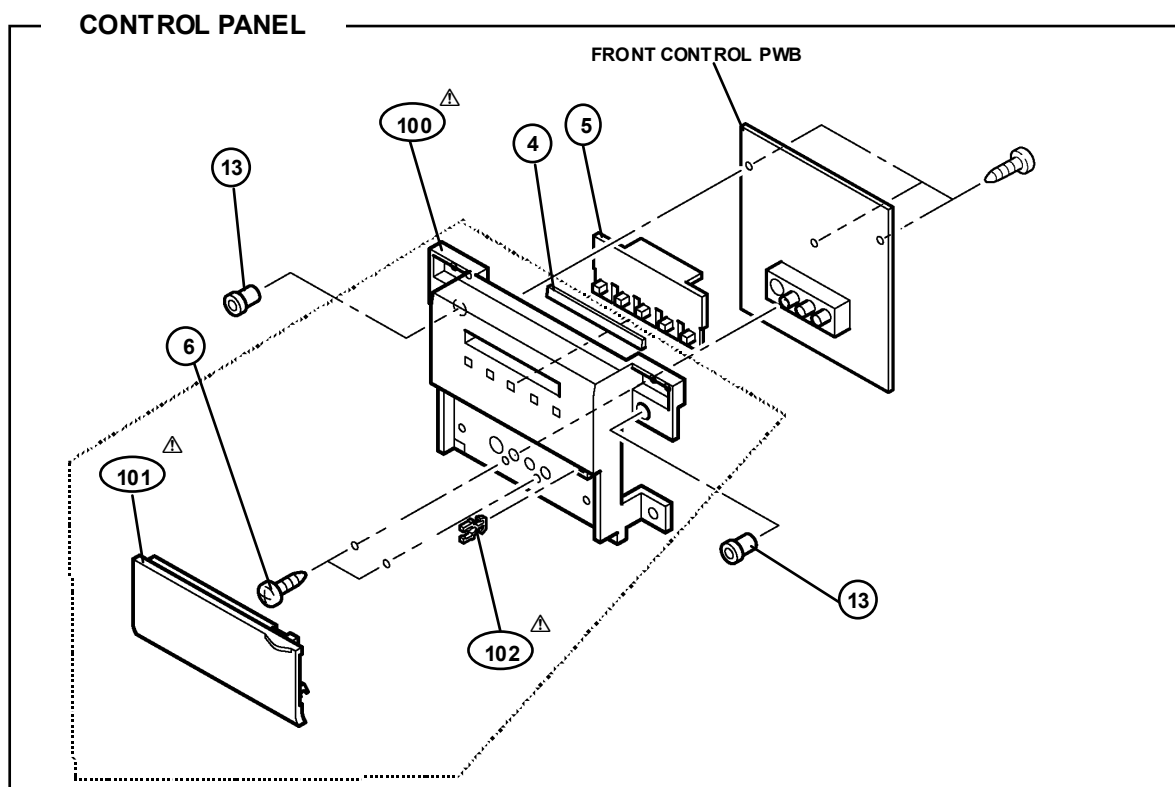
USING PW BOARD & REMOTE CONTROL UNIT

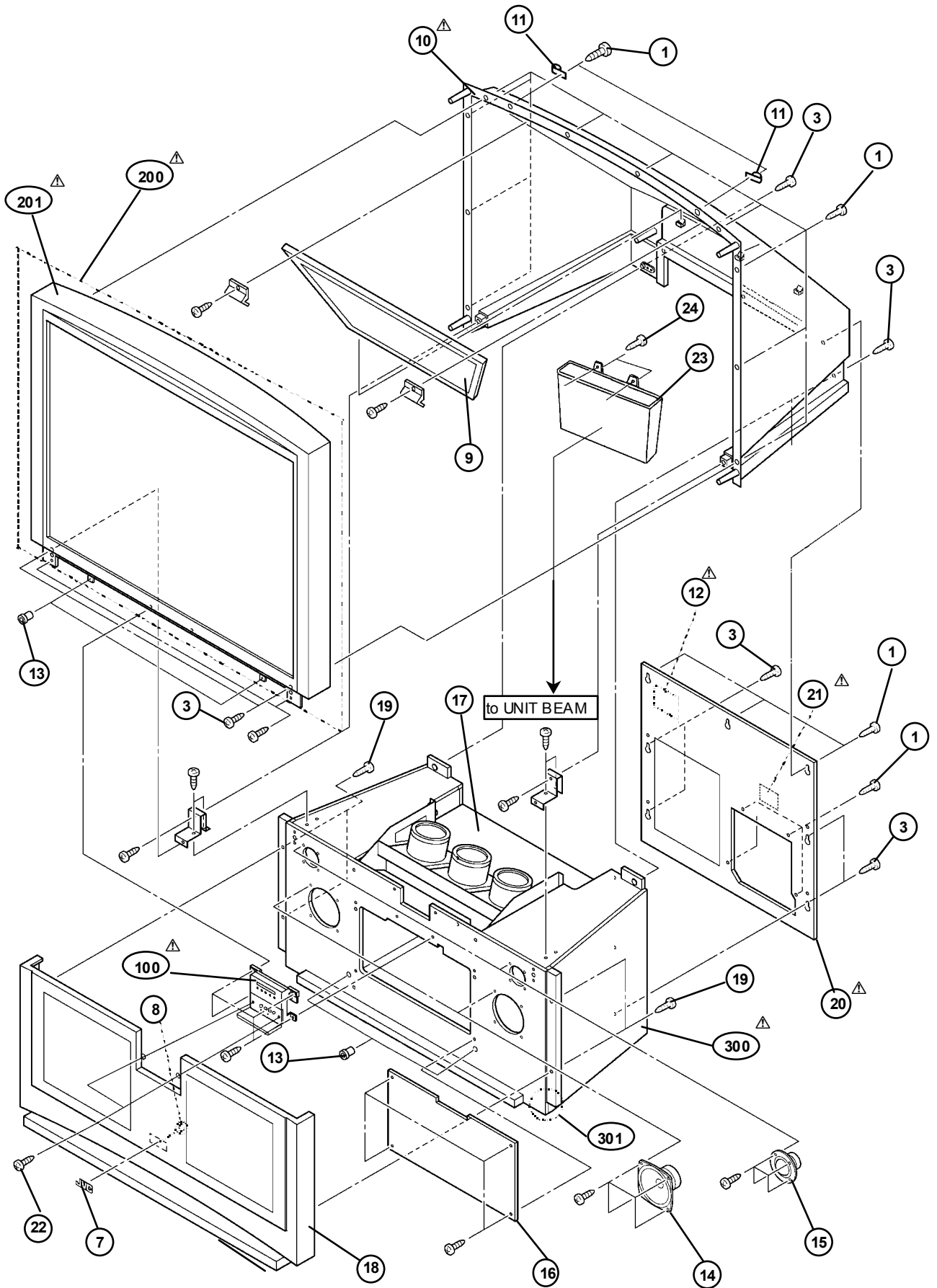
PWB ASS'Y	Model
	AV-56WP30
MAIN PWB ASSY	SSB-1053A-M2
POWER&DEF. PWB ASSY	SSB-2053A-M2
R CRT SOCKET PWB ASSY	SSB-3153A-M2
G CRT SOCKET PWB ASSY	SSB-3253A-M2
B CRT SOCKET PWB ASSY	SSB-3353A-M2
CONVERGENCE PWB ASSY	SSB-5053A-M2
R VM PWB ASSY	SSB-7153A-M2
G VM PWB ASSY	SSB-7253A-M2
B VM PWB ASSY	SSB-7353A-M2
FRONT CONTROL PWB ASSY	SSB0L053A-M2
FRONT I/F PWB ASSY	SSB0L253A-M2
RECEIVER PWB ASSY	SSB0R253A-M2
CENTER SPEAKER PWB ASSY	SSB0A053A-M2
AV JACK PWB ASSY	SSB0J053A-M2
LINE FILTER PWB ASSY	SSB-9053A-M2
DEF. OSC. PWB ASSY	SSB0H053A-M2
CONVERGENCE OSD PWB ASSY	SSB0T053A-M2
REMOCON SENSOR PWB ASSY	SSB-8053A-M2
DIGITAL INPUT MODULE PWB	SSB-7853A-M2
I-P CONVERT MODULE PWB	SSB0D053A-M2
REMOTE CONTROL UNIT	RM-C322G-1A

EXPLODED VIEW PARTS LIST (I)

△ Ref.No.	Part No.	Part Name	Description
1	QYSBSFG4016M	TAP SCREW	(x 19)
3	QYSBSAG4018M	TAP SCREW	(x 8)
4	LC31749-001A-A	LED LENS	
5	LC31751-002A-A	KNOB	
6	QYSBSF3012M	TAP SCREW	(x 2)
7	CM47752-004	BRAND MARK	
8	QYNSS3000P	PUSH NUT	
9	LC31954-001A-A	MIRROR	
△ 10	LC11407-001B-A	BACK COVER	
11	LC40690-001A	CLAMP	(x 2)
△ 12	LC31139-001A-A	RATING LABEL	
13	LC41237-001A	RUBBER CATCH	(x 6)
14	QAS0113-001	SPEAKER	(x 2) SP01-02
15	QAS0105-001	SPEAKER	(x 2) SP03-04
16	LC31757-001D-A	FRONT BOARD	
17	LC20981-003A-A	SHADING BOARD	
18	LC11406-001B-A	SPEAKER GRILL	
19	QYSBSFG4020M	TAP SCREW	(x 4)
△ 20	LC20982-001B-A	BACK BOARD	
△ 21	LC41424-001A-A	HDCP WARNING	
22	QYSBSF3012M	TAP SCREW	(x 2)
23	CM22765-001-A	COOLANT P	
24	QYSBSF4012Z	TAP SCREW	(x 2)
△ 100	LC31883-002B-A	CONTROL ASSY	Inc. No. 101~102
△ 101	LC31829-002A-A	DOOR	
△ 102	PU60109	CATCHER	
△ 200	56WP30SCSAM2	SCREEN ASSY	Inc. No. 201 (SERVICE)
△ 201	LC11405-001B-A	FRONT PANEL	
△ 300	LC11408-001A-A	BODY	Inc. No. 301
301	CM36396-00B-A	CASTER	(x 4)

EXPLODED VIEW (I)

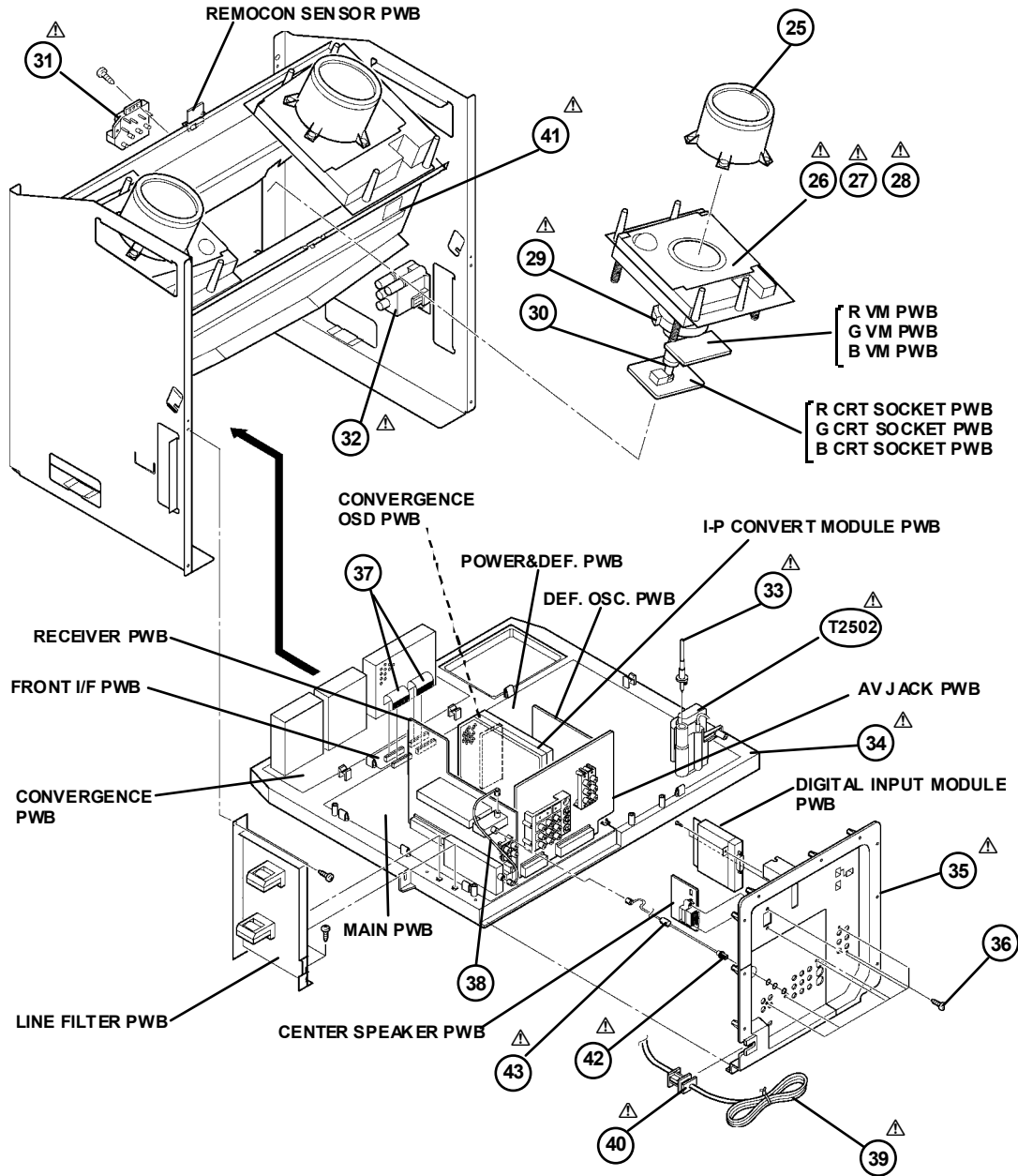




EXPLODED VIEW PARTS LIST (II)

△ Ref.No.	Part No.	Part Name	Description	△ Ref.No.	Part No.	Part Name	Description
25	LC31736-001A-A	PJ LENS D		36	QYSBSF3012M	TAP SCREW	(x7)
△ 26	R CRT SA-M2	R CRT ASSY		37	CHF0125-06BD	FFC WIRE	(x2)
△ 27	G CRT SA-M2	G CRT ASSY		38	WJX0014-001A	E-COAXIAL	
△ 28	B CRT SA-M2	B CRT ASSY		△ 39	QMPD200-200-JC	POWER CORD	or QMPD390-200-JS
△ 29	QQD0069-001	DEF YOKE		△ 40	LC20106-001D-A	POWER CORD CLAMP	
△ 30	QAL0398-001	PC MAGNET		△ 41	GQ30034-001A-A	WARNING LABEL	
△ 31	QAE0006-001	FOCUS PACK		△ 42	QAM0411-001	F CABLE	
△ 32	QAE0005-001	DIVIDER		△ 43	QQR0490-001	NOISE FILTER	
△ 33	QNZ0563-001	ANODE WIRE		△ T2502	QQH0113-002	FBT	
△ 34	LC11249-001A-A	CHASSIS BASE		△	QQR0491-001	CORE FILTER	(x3)
△ 35	LC11250-001B-A	AV BOARD		△	QQR0942-001	CORE FILTER	

EXPLODED VIEW (II)



PRINTED WIRING BOARD PARTS LIST

MAIN P.W. BOARD ASS'Y (SSB-1053A-M2)

△ Symbol No.	Part No.	Part Name	Description
RESISTOR			
R1001	NRS463J-222X	MG R	2.2kΩ 1/16W J
R1004	NRS463J-332X	MG R	3.3kΩ 1/16W J
R1005	NRS463J-473X	MG R	47kΩ 1/16W J
R1006	NRS463J-473X	MG R	47kΩ 1/16W J
R1007	NRS463J-152X	MG R	1.5kΩ 1/16W J
R1011	NRS463J-102X	MG R	1kΩ 1/16W J
R1013	NRS463J-101X	MG R	100Ω 1/16W J
R1014	NRS463J-223X	MG R	22kΩ 1/16W J
R1020	NRS463J-473X	MG R	47kΩ 1/16W J
R1021	NRS463J-103X	MG R	10kΩ 1/16W J
R1022	NRS463J-101X	MG R	100Ω 1/16W J
R1023	NRS463J-101X	MG R	100Ω 1/16W J
R1024	NRS463J-391X	MG R	390Ω 1/16W J
R1025	NRS463J-182X	MG R	1.8kΩ 1/16W J
R1050	NRS463J-0R0X	MG R	0.0Ω 1/16W J
R1051	NRS463J-0R0X	MG R	0.0Ω 1/16W J
R1052	NRS463J-0R0X	MG R	0.0Ω 1/16W J
R1101	NRS463J-473X	MG R	47kΩ 1/16W J
R1102	NRS463J-0R0X	MG R	0.0Ω 1/16W J
R1103	NRS463J-0R0X	MG R	0.0Ω 1/16W J
R1104	NRS463J-0R0X	MG R	0.0Ω 1/16W J
R1117	QRN143J-0R0X	C R	0.0Ω 1/4W J
R1122	NRS463J-0R0X	MG R	0.0Ω 1/16W J
R1131	NRS463J-0R0X	MG R	0.0Ω 1/16W J
R1133	NRS463J-121X	MG R	120Ω 1/16W J
R1134	NRS463J-0R0X	MG R	0.0Ω 1/16W J
R1135	NRS463J-121X	MG R	120Ω 1/16W J
R1136	NRS463J-0R0X	MG R	0.0Ω 1/16W J
R1137	NRS463J-121X	MG R	120Ω 1/16W J
R1140	NRS463J-222X	MG R	2.2kΩ 1/16W J
R1141	NRS463J-222X	MG R	2.2kΩ 1/16W J
R1143	NRS463J-101X	MG R	100Ω 1/16W J
R1144	NRS463J-222X	MG R	2.2kΩ 1/16W J
R1145	NRS463J-471X	MG R	470Ω 1/16W J
R1147	NRS463J-681X	MG R	680Ω 1/16W J
R1149	NRS463J-681X	MG R	680Ω 1/16W J
R1153	NRS463J-221X	MG R	220Ω 1/16W J
R1154	NRS463J-221X	MG R	220Ω 1/16W J
R1157	NRS463J-470X	MG R	47Ω 1/16W J
R1158	NRS463J-0R0X	MG R	0.0Ω 1/16W J
R1159	NRS463J-0R0X	MG R	0.0Ω 1/16W J
R1161	NRS463J-222X	MG R	2.2kΩ 1/16W J
R1163	NRS463J-224X	MG R	220kΩ 1/16W J
R1164	NRS463J-224X	MG R	220kΩ 1/16W J
R1165	NRS463J-224X	MG R	220kΩ 1/16W J
R1166	NRS463J-471X	MG R	470Ω 1/16W J
R1167	NRS463J-0R0X	MG R	0.0Ω 1/16W J
R1174	NRS463J-101X	MG R	100Ω 1/16W J
R1175	NRS463J-224X	MG R	220kΩ 1/16W J
R1176	NRS463J-224X	MG R	220kΩ 1/16W J
R1177	NRS463J-224X	MG R	220kΩ 1/16W J
R1179	NRS463J-0R0X	MG R	0.0Ω 1/16W J
R1180	NRS463J-221X	MG R	220Ω 1/16W J
R1181	NRS463J-221X	MG R	220Ω 1/16W J
R1182	NRS463J-221X	MG R	220Ω 1/16W J
R1183	NRS463J-101X	MG R	100Ω 1/16W J
R1184	NRS463J-101X	MG R	100Ω 1/16W J
R1185	NRS463J-101X	MG R	100Ω 1/16W J
R1186	NRS463J-101X	MG R	100Ω 1/16W J
R1187	NRS463J-224X	MG R	220kΩ 1/16W J
R1188	NRS463J-224X	MG R	220kΩ 1/16W J
R1189	NRS463J-224X	MG R	220kΩ 1/16W J
R1190	NRS463J-101X	MG R	100Ω 1/16W J
R1198	NRS463J-271X	MG R	270Ω 1/16W J
R1199	NRV463D-102X	MF R	1kΩ 1/16W D
R1202	NRS463J-101X	MG R	100Ω 1/16W J
R1203	NRS463J-101X	MG R	100Ω 1/16W J
R1213	NRS463J-101X	MG R	100Ω 1/16W J
R1214	NRS463J-101X	MG R	100Ω 1/16W J
R1218	NRS463J-822X	MG R	8.2kΩ 1/16W J
R1219	NRS463J-331X	MG R	330Ω 1/16W J

△ Symbol No.	Part No.	Part Name	Description
RESISTOR			
R1220	NRS463J-101X	MG R	100Ω 1/16W J
R1221	NRS463J-101X	MG R	100Ω 1/16W J
R1224	NRS463J-101X	MG R	100Ω 1/16W J
R1225	NRS463J-101X	MG R	100Ω 1/16W J
R1226	NRS463J-103X	MG R	10kΩ 1/16W J
R1227	NRS463J-103X	MG R	10kΩ 1/16W J
R1228	NRS463J-222X	MG R	2.2kΩ 1/16W J
R1229	NRS463J-103X	MG R	10kΩ 1/16W J
R1230	NRS463J-101X	MG R	100Ω 1/16W J
R1231	NRS463J-221X	MG R	220Ω 1/16W J
R1232	NRS463J-562X	MG R	5.6kΩ 1/16W J
R1234	NRS463J-562X	MG R	5.6kΩ 1/16W J
R1235	NRS463J-221X	MG R	220Ω 1/16W J
R1236	NRS463J-562X	MG R	5.6kΩ 1/16W J
R1241	NRS463J-0R0X	MG R	0.0Ω 1/16W J
R1242	NRS463J-0R0X	MG R	0.0Ω 1/16W J
R1250	NRS463J-332X	MG R	3.3kΩ 1/16W J
R1251	NRS463J-101X	MG R	100Ω 1/16W J
R1252	NRS463J-152X	MG R	1.5kΩ 1/16W J
R1253	NRS463J-102X	MG R	1kΩ 1/16W J
R1254	NRS463J-393X	MG R	39kΩ 1/16W J
R1258	NRS463J-102X	MG R	1kΩ 1/16W J
R1260	NRS463J-102X	MG R	1kΩ 1/16W J
R1264	NRS463J-152X	MG R	1.5kΩ 1/16W J
R1265	NRS463J-153X	MG R	15kΩ 1/16W J
R1268	NRS463J-272X	MG R	2.7kΩ 1/16W J
R1269	NRS463J-332X	MG R	3.3kΩ 1/16W J
R1270	NRS463J-222X	MG R	2.2kΩ 1/16W J
R1271	NRS463J-332X	MG R	3.3kΩ 1/16W J
R1272	NRS463J-101X	MG R	100Ω 1/16W J
R1273	NRS463J-101X	MG R	100Ω 1/16W J
R1274	NRS402J-394X	MG R	390kΩ 1/10W J
R1275	NRS463J-101X	MG R	100Ω 1/16W J
R1276	NRS463J-101X	MG R	100Ω 1/16W J
R1278	NRS463J-471X	MG R	470Ω 1/16W J
R1279	NRS463J-331X	MG R	330Ω 1/16W J
R1280	NRS463J-101X	MG R	100Ω 1/16W J
R1282	NRV463D-103X	MF R	10kΩ 1/16W D
R1283	NRS463J-682X	MG R	6.8kΩ 1/16W J
R1284	NRS463J-391X	MG R	390Ω 1/16W J
R1301	NRS463J-0R0X	MG R	0.0Ω 1/16W J
R1302	NRS463J-472X	MG R	4.7kΩ 1/16W J
R1303	NRS463J-392X	MG R	3.9kΩ 1/16W J
R1304	NRS463J-101X	MG R	100Ω 1/16W J
R1306	NRS463J-105X	MG R	1MΩ 1/16W J
R1307	NRS463J-123X	MG R	12kΩ 1/16W J
R1308	NRS463J-222X	MG R	2.2kΩ 1/16W J
R1309	NRS463J-124X	MG R	120kΩ 1/16W J
R1310	NRS463J-272X	MG R	2.7kΩ 1/16W J
R1311	NRS463J-101X	MG R	100Ω 1/16W J
R1312	NRS463J-101X	MG R	100Ω 1/16W J
R1313	NRS463J-222X	MG R	2.2kΩ 1/16W J
R1314	NRS463J-103X	MG R	10kΩ 1/16W J
R1317	NRS463J-0R0X	MG R	0.0Ω 1/16W J
R1318	NRS463J-821X	MG R	820Ω 1/16W J
R1319	NRS463J-222X	MG R	2.2kΩ 1/16W J
R1320	NRS463J-222X	MG R	2.2kΩ 1/16W J
R1321	NRS463J-222X	MG R	2.2kΩ 1/16W J
R1322	NRS463J-222X	MG R	2.2kΩ 1/16W J
R1323	NRS463J-104X	MG R	100kΩ 1/16W J
R1324	NRS463J-221X	MG R	220Ω 1/16W J
R1325	NRS463J-221X	MG R	220Ω 1/16W J
R1326	NRS463J-0R0X	MG R	0.0Ω 1/16W J
R1327	NRS463J-221X	MG R	220Ω 1/16W J
R1328	NRS463J-101X	MG R	100Ω 1/16W J
R1329	NRS463J-101X	MG R	100Ω 1/16W J
R1330	NRS463J-182X	MG R	1.8kΩ 1/16W J
R1331	NRS463J-223X	MG R	22kΩ 1/16W J
R1332	NRS463J-182X	MG R	1.8kΩ 1/16W J
R1333	NRS463J-104X	MG R	100kΩ 1/16W J
R1334	NRS463J-151X	MG R	150Ω 1/16W J

△ Symbol No.	Part No.	Part Name	Description
RESISTOR			
R1335	NRSA63J-151X	MG R	150Ω 1/16W J
R1336	NRSA63J-151X	MG R	150Ω 1/16W J
R1337	NRSA63J-151X	MG R	150Ω 1/16W J
R1338	NRSA63J-182X	MG R	1.8kΩ 1/16W J
R1339	NRSA63J-104X	MG R	100kΩ 1/16W J
R1340	NRSA63J-151X	MG R	150Ω 1/16W J
R1341	NRSA63J-151X	MG R	150Ω 1/16W J
R1342	NRVA63D-152X	MF R	1.5kΩ 1/16W D
R1343	NRVA63D-122X	MF R	1.2kΩ 1/16W D
R1344	NRSA63J-471X	MG R	470Ω 1/16W J
R1345	NRSA63J-471X	MG R	470Ω 1/16W J
R1346	NRSA63J-680X	MG R	68Ω 1/16W J
R1347	NRSA63J-680X	MG R	68Ω 1/16W J
R1348	NRSA63J-680X	MG R	68Ω 1/16W J
R1349	NRSA63J-471X	MG R	470Ω 1/16W J
R1350	NRSA63J-563X	MG R	56kΩ 1/16W J
R1352	NRSA63J-103X	MG R	10kΩ 1/16W J
R1353	NRSA63J-223X	MG R	22kΩ 1/16W J
R1354	NRSA63J-471X	MG R	470Ω 1/16W J
R1355	NRSA63J-562X	MG R	5.6kΩ 1/16W J
R1356	NRSA63J-182X	MG R	1.8kΩ 1/16W J
R1359	NRSA63J-101X	MG R	100Ω 1/16W J
R1363	NRSA63J-101X	MG R	100Ω 1/16W J
R1364	NRSA63J-102X	MG R	1kΩ 1/16W J
R1366	NRSA63J-471X	MG R	470Ω 1/16W J
R1367	NRSA63J-222X	MG R	2.2kΩ 1/16W J
R1368	NRSA63J-103X	MG R	10kΩ 1/16W J
R1369	NRSA63J-0R0X	MG R	0.0Ω 1/16W J
R1370	NRVA63D-182X	MF R	1.8kΩ 1/16W D
R1371	NRSA63J-222X	MG R	2.2kΩ 1/16W J
R1373	NRSA63J-332X	MG R	3.3kΩ 1/16W J
R1374	NRSA63J-472X	MG R	4.7kΩ 1/16W J
R1377	NRSA63J-103X	MG R	10kΩ 1/16W J
R1378	NRSA63J-152X	MG R	1.5kΩ 1/16W J
R1379	NRSA63J-102X	MG R	1kΩ 1/16W J
R1380	NRSA63J-562X	MG R	5.6kΩ 1/16W J
R1391	NRSA63J-221X	MG R	220Ω 1/16W J
R1392	NRSA63J-221X	MG R	220Ω 1/16W J
R1395	NRSA63J-102X	MG R	1kΩ 1/16W J
R1396	NRSA63J-561X	MG R	560Ω 1/16W J
R1401	NRSA63J-101X	MG R	100Ω 1/16W J
R1408	NRSA63J-0R0X	MG R	0.0Ω 1/16W J
R1415	NRSA63J-0R0X	MG R	0.0Ω 1/16W J
R1430	NRSA63J-101X	MG R	100Ω 1/16W J
R1432	NRSA63J-682X	MG R	6.8kΩ 1/16W J
R1434	NRSA63J-103X	MG R	10kΩ 1/16W J
R1435	NRSA63J-473X	MG R	47kΩ 1/16W J
R1441	NRSA63J-223X	MG R	22kΩ 1/16W J
R1442	NRSA63J-103X	MG R	10kΩ 1/16W J
R1450	NRSA63J-221X	MG R	220Ω 1/16W J
R1451	NRSA63J-182X	MG R	1.8kΩ 1/16W J
R1452	NRSA63J-101X	MG R	100Ω 1/16W J
R1453	NRSA63J-391X	MG R	390Ω 1/16W J
R1454	NRSA63J-561X	MG R	560Ω 1/16W J
R1455	NRSA63J-562X	MG R	5.6kΩ 1/16W J
R1456	NRSA63J-223X	MG R	22kΩ 1/16W J
R1463	NRSA63J-102X	MG R	1kΩ 1/16W J
R1464	NRSA63J-122X	MG R	1.2kΩ 1/16W J
R1465	NRSA63J-102X	MG R	1kΩ 1/16W J
R1467	NRSA63J-103X	MG R	10kΩ 1/16W J
R1468	NRSA63J-101X	MG R	100Ω 1/16W J
R1469	NRSA63J-472X	MG R	4.7kΩ 1/16W J
R1470	NRSA63J-563X	MG R	56kΩ 1/16W J
R1472	NRSA63J-101X	MG R	100Ω 1/16W J
R1473	NRSA63J-152X	MG R	1.5kΩ 1/16W J
R1474	NRSA63J-562X	MG R	5.6kΩ 1/16W J
R1475	NRSA63J-102X	MG R	1kΩ 1/16W J
R1477	NRSA63J-562X	MG R	5.6kΩ 1/16W J
R1478	NRSA63J-152X	MG R	1.5kΩ 1/16W J
R1479	NRSA63J-101X	MG R	100Ω 1/16W J
R1480	NRSA63J-223X	MG R	22kΩ 1/16W J
R1481	NRSA63J-101X	MG R	100Ω 1/16W J
R1482	NRSA63J-103X	MG R	10kΩ 1/16W J

△ Symbol No.	Part No.	Part Name	Description
RESISTOR			
R1483	NRSA63J-182X	MG R	1.8kΩ 1/16W J
R1484	NRSA63J-221X	MG R	220Ω 1/16W J
R1485	NRSA63J-391X	MG R	390Ω 1/16W J
R1486	NRSA63J-561X	MG R	560Ω 1/16W J
R1487	NRSA63J-562X	MG R	5.6kΩ 1/16W J
R1488	NRSA63J-223X	MG R	22kΩ 1/16W J
R1490	NRSA63J-102X	MG R	1kΩ 1/16W J
R1491	NRSA63J-122X	MG R	1.2kΩ 1/16W J
R1492	NRSA63J-102X	MG R	1kΩ 1/16W J
R1493	NRSA63J-102X	MG R	1kΩ 1/16W J
R1495	NRSA63J-103X	MG R	10kΩ 1/16W J
R1496	NRSA63J-101X	MG R	100Ω 1/16W J
R1497	NRSA63J-472X	MG R	4.7kΩ 1/16W J
R1498	NRSA63J-563X	MG R	56kΩ 1/16W J
R1501	NRSA63J-221X	MG R	220Ω 1/16W J
R1502	NRSA63J-221X	MG R	220Ω 1/16W J
R1503	NRSA63J-103X	MG R	10kΩ 1/16W J
R1507	NRSA63J-101X	MG R	100Ω 1/16W J
R1508	NRSA63J-101X	MG R	100Ω 1/16W J
R1514	NRSA63J-102X	MG R	1kΩ 1/16W J
R1515	NRSA63J-221X	MG R	220Ω 1/16W J
R1516	NRSA63J-682X	MG R	6.8kΩ 1/16W J
R1517	NRSA63J-221X	MG R	220Ω 1/16W J
R1518	NRSA63J-682X	MG R	6.8kΩ 1/16W J
R1519	NRSA63J-221X	MG R	220Ω 1/16W J
R1521	NRSA63J-221X	MG R	220Ω 1/16W J
R1522	NRSA63J-221X	MG R	220Ω 1/16W J
R1524	NRSA63J-221X	MG R	220Ω 1/16W J
R1526	NRSA63J-682X	MG R	6.8kΩ 1/16W J
R1527	NRSA63J-221X	MG R	220Ω 1/16W J
R1528	NRSA63J-682X	MG R	6.8kΩ 1/16W J
R1529	NRSA63J-221X	MG R	220Ω 1/16W J
R1530	NRSA63J-102X	MG R	1kΩ 1/16W J
R1531	NRSA63J-101X	MG R	100Ω 1/16W J
R1532	NRSA63J-0R0X	MG R	0.0Ω 1/16W J
R1533	NRSA63J-221X	MG R	220Ω 1/16W J
R1534	NRSA63J-682X	MG R	6.8kΩ 1/16W J
R1535	NRSA63J-221X	MG R	220Ω 1/16W J
R1536	NRSA63J-682X	MG R	6.8kΩ 1/16W J
R1537	NRSA63J-221X	MG R	220Ω 1/16W J
R1538	NRSA63J-221X	MG R	220Ω 1/16W J
R1539	NRSA63J-682X	MG R	6.8kΩ 1/16W J
R1547	NRSA63J-682X	MG R	6.8kΩ 1/16W J
R1548	NRSA63J-0R0X	MG R	0.0Ω 1/16W J
R1549	NRSA63J-682X	MG R	6.8kΩ 1/16W J
R1551	NRSA63J-0R0X	MG R	0.0Ω 1/16W J
R1554	NRSA63J-0R0X	MG R	0.0Ω 1/16W J
R1555	NRSA63J-103X	MG R	10kΩ 1/16W J
R1556	NRSA63J-101X	MG R	100Ω 1/16W J
R1557	NRSA63J-101X	MG R	100Ω 1/16W J
R1560	NRSA63J-102X	MG R	1kΩ 1/16W J
R1561	NRSA63J-101X	MG R	100Ω 1/16W J
R1562	NRSA63J-101X	MG R	100Ω 1/16W J
R1570	NRSA63J-103X	MG R	10kΩ 1/16W J
R1571	NRVA63D-152X	MF R	1.5kΩ 1/16W D
R1572	NRSA63J-471X	MG R	470Ω 1/16W J
R1576	NRSA63J-273X	MG R	27kΩ 1/16W J
R1577	NRSA63J-221X	MG R	220Ω 1/16W J
R1578	NRSA63J-682X	MG R	6.8kΩ 1/16W J
R1579	NRSA63J-221X	MG R	220Ω 1/16W J
R1581	NRSA63J-101X	MG R	100Ω 1/16W J
R1586	NRSA63J-0R0X	MG R	0.0Ω 1/16W J
R1587	NRSA63J-0R0X	MG R	0.0Ω 1/16W J
R1588	NRSA63J-0R0X	MG R	0.0Ω 1/16W J
R1589	NRSA63J-0R0X	MG R	0.0Ω 1/16W J
R1611	NRSA63J-563X	MG R	56kΩ 1/16W J
R1612	NRSA63J-563X	MG R	56kΩ 1/16W J
R1613	NRSA63J-102X	MG R	1kΩ 1/16W J
R1614	NRSA63J-104X	MG R	100kΩ 1/16W J
R1615	NRSA63J-563X	MG R	56kΩ 1/16W J
R1616	NRSA63J-153X	MG R	15kΩ 1/16W J
R1618	NRSA63J-0R0X	MG R	0.0Ω 1/16W J
R1619	NRSA63J-0R0X	MG R	0.0Ω 1/16W J

△	Ref.No.	Part No.	Part Name	Description
	RESISTOR			
	R1634	NRS463J-0R0X	MG R	0.0Ω 1/16W J
	R1635	NRS463J-0R0X	MG R	0.0Ω 1/16W J
	R1638	NRS463J-0R0X	MG R	0.0Ω 1/16W J
	R1639	NRS463J-0R0X	MG R	0.0Ω 1/16W J
	R1644	NRS463J-0R0X	MG R	0.0Ω 1/16W J
	R1654	NRS463J-0R0X	MG R	0.0Ω 1/16W J
	R1655	NRS463J-0R0X	MG R	0.0Ω 1/16W J
	R1656	NRS463J-0R0X	MG R	0.0Ω 1/16W J
	R1658	NRS463J-103X	MG R	10kΩ 1/16W J
	R1659	NRS463J-103X	MG R	10kΩ 1/16W J
	R1661	NRS463J-0R0X	MG R	0.0Ω 1/16W J
	R1663	NRS463J-0R0X	MG R	0.0Ω 1/16W J
	R1665	NRS463J-222X	MG R	2.2kΩ 1/16W J
	R1666	NRS463J-472X	MG R	4.7kΩ 1/16W J
	R1667	NRS463J-222X	MG R	2.2kΩ 1/16W J
	R1668	NRS463J-222X	MG R	2.2kΩ 1/16W J
	R1669	NRS463J-472X	MG R	4.7kΩ 1/16W J
	R1670	NRS463J-222X	MG R	2.2kΩ 1/16W J
△	R1671	QRJ146J-2R2X	C R	2.2Ω 1/4W J
△	R1672	QRJ146J-2R2X	C R	2.2Ω 1/4W J
△	R1673	QRK126J-102X	C R	1kΩ 1/2W J
△	R1674	QRK126J-102X	C R	1kΩ 1/2W J
	R1680	NRS463J-822X	MG R	8.2kΩ 1/16W J
	R1681	NRS463J-473X	MG R	47kΩ 1/16W J
	R1682	NRS463J-103X	MG R	10kΩ 1/16W J
	R1691	NRS463J-104X	MG R	100kΩ 1/16W J
	R1701	NRS463J-104X	MG R	100kΩ 1/16W J
	R1702	NRS463J-103X	MG R	10kΩ 1/16W J
	R1703	NRS463J-0R0X	MG R	0.0Ω 1/16W J
	R1704	NRS463J-221X	MG R	220Ω 1/16W J
	R1706	NRS463J-104X	MG R	100kΩ 1/16W J
	R1707	NRS463J-0R0X	MG R	0.0Ω 1/16W J
	R1709	NRS463J-104X	MG R	100kΩ 1/16W J
	R1710	NRS463J-104X	MG R	100kΩ 1/16W J
	R1712	NRS463J-0R0X	MG R	0.0Ω 1/16W J
	R1714	NRS463J-103X	MG R	10kΩ 1/16W J
	R1715	NRS463J-101X	MG R	100Ω 1/16W J
	R1716	NRS463J-101X	MG R	100Ω 1/16W J
	R1719	NRS463J-0R0X	MG R	0.0Ω 1/16W J
	R1721	NRS463J-102X	MG R	1kΩ 1/16W J
	R1722	NRS463J-0R0X	MG R	0.0Ω 1/16W J
	R1724	NRS463J-103X	MG R	10kΩ 1/16W J
	R1725	NRS463J-101X	MG R	100Ω 1/16W J
	R1726	NRS463J-101X	MG R	100Ω 1/16W J
	R1727	NRS463J-103X	MG R	10kΩ 1/16W J
	R1728	NRS463J-102X	MG R	1kΩ 1/16W J
	R1729	NRS463J-101X	MG R	100Ω 1/16W J
	R1730	NRS463J-272X	MG R	2.7kΩ 1/16W J
	R1731	NRS463J-101X	MG R	100Ω 1/16W J
	R1732	NRS463J-272X	MG R	2.7kΩ 1/16W J
	R1733	NRS463J-102X	MG R	1kΩ 1/16W J
	R1735	NRS463J-104X	MG R	100kΩ 1/16W J
	R1736	NRS463J-333X	MG R	33kΩ 1/16W J
	R1737	NRS463J-101X	MG R	100Ω 1/16W J
	R1738	NRS463J-333X	MG R	33kΩ 1/16W J
	R1744	NRS463J-101X	MG R	100Ω 1/16W J
	R1746	NRS463J-332X	MG R	3.3kΩ 1/16W J
	R1747	NRS463J-0R0X	MG R	0.0Ω 1/16W J
	R1748	NRS463J-102X	MG R	1kΩ 1/16W J
	R1749	NRS463J-124X	MG R	120kΩ 1/16W J
	R1750	NRS463J-104X	MG R	100kΩ 1/16W J
	R1751	NRS463J-473X	MG R	47kΩ 1/16W J
	R1752	NRS463J-333X	MG R	33kΩ 1/16W J
	R1753	NRS463J-333X	MG R	33kΩ 1/16W J
	R1754	NRS463J-0R0X	MG R	0.0Ω 1/16W J
	R1756	NRS463J-103X	MG R	10kΩ 1/16W J
	R1760	NRS463J-0R0X	MG R	0.0Ω 1/16W J
	R1761	NRS463J-102X	MG R	1kΩ 1/16W J
	R1762	NRS463J-124X	MG R	120kΩ 1/16W J
	R1763	NRS463J-333X	MG R	33kΩ 1/16W J
	R1764	NRS463J-333X	MG R	33kΩ 1/16W J

△	Symbol No.	Part No.	Part Name	Description
	RESISTOR			
	R1765	NRS463J-102X	MG R	1kΩ 1/16W J
	R1766	NRS463J-332X	MG R	3.3kΩ 1/16W J
	R1767	NRS463J-151X	MG R	150Ω 1/16W J
	R1768	NRS463J-101X	MG R	100Ω 1/16W J
	R1770	NRS463J-101X	MG R	100Ω 1/16W J
	R1773	NRS463J-0R0X	MG R	0.0Ω 1/16W J
	R1775	NRS463J-332X	MG R	3.3kΩ 1/16W J
	R1776	NRS463J-333X	MG R	33kΩ 1/16W J
	R1777	NRS463J-103X	MG R	10kΩ 1/16W J
	R1778	NRS463J-103X	MG R	10kΩ 1/16W J
	R1779	NRS463J-102X	MG R	1kΩ 1/16W J
	R1780	NRS463J-103X	MG R	10kΩ 1/16W J
	R1781	NRS463J-333X	MG R	33kΩ 1/16W J
	R1782	NRS463J-681X	MG R	680Ω 1/16W J
	R1783	NRS463J-101X	MG R	100Ω 1/16W J
	R1784	NRS463J-682X	MG R	6.8kΩ 1/16W J
	R1785	NRS463J-103X	MG R	10kΩ 1/16W J
	R1787	NRS463J-472X	MG R	4.7kΩ 1/16W J
	R1788	NRS463J-680X	MG R	68Ω 1/16W J
	R1789	NRS463J-680X	MG R	68Ω 1/16W J
	R1790	NRS463J-680X	MG R	68Ω 1/16W J
	R1791	NRS463J-101X	MG R	100Ω 1/16W J
	R1792	NRS463J-102X	MG R	1kΩ 1/16W J
	R1793	NRS463J-104X	MG R	100kΩ 1/16W J
	R1794	NRS463J-101X	MG R	100Ω 1/16W J
	R1802	NRS463J-104X	MG R	100kΩ 1/16W J
	R1803	NRS463J-473X	MG R	47kΩ 1/16W J
	R1804	NRS463J-101X	MG R	100Ω 1/16W J
	R1806	NRS463J-101X	MG R	100Ω 1/16W J
	R1808	NRS463J-151X	MG R	150Ω 1/16W J
	R1811	NRS463J-101X	MG R	100Ω 1/16W J
	R1814	NRS463J-102X	MG R	1kΩ 1/16W J
	R1815	NRS463J-0R0X	MG R	0.0Ω 1/16W J
	R1816	NRS463J-0R0X	MG R	0.0Ω 1/16W J
	R1817	NRS463J-101X	MG R	100Ω 1/16W J
	R1818	NRS463J-0R0X	MG R	0.0Ω 1/16W J
	R1820	NRS463J-393X	MG R	39kΩ 1/16W J
	R1822	NRS463J-472X	MG R	4.7kΩ 1/16W J
	R1823	NRS463J-124X	MG R	120kΩ 1/16W J
	R1829	NRS463J-103X	MG R	10kΩ 1/16W J
	R1830	NRS463J-102X	MG R	1kΩ 1/16W J
	R1831	NRS463J-102X	MG R	1kΩ 1/16W J
	R1832	NRS463J-103X	MG R	10kΩ 1/16W J
	R1834	NRS463J-102X	MG R	1kΩ 1/16W J
	R1836	NRS463J-101X	MG R	100Ω 1/16W J
	R1837	NRS463J-333X	MG R	33kΩ 1/16W J
	R1838	NRS463J-101X	MG R	100Ω 1/16W J
	R1839	NRS463J-333X	MG R	33kΩ 1/16W J
	R1840	NRS463J-102X	MG R	1kΩ 1/16W J
	R1843	NRS463J-103X	MG R	10kΩ 1/16W J
	R1844	NRS463J-103X	MG R	10kΩ 1/16W J
	R1847	NRS463J-101X	MG R	100Ω 1/16W J
	R1850	NRS463J-0R0X	MG R	0.0Ω 1/16W J
	R1880	NRS463J-102X	MG R	1kΩ 1/16W J
	R1881	NRS463J-221X	MG R	220Ω 1/16W J
	R1882	NRS463J-222X	MG R	2.2kΩ 1/16W J
	R1883	NRS463J-103X	MG R	10kΩ 1/16W J
	R1884	NRS463J-102X	MG R	1kΩ 1/16W J
	R1887	NRS463J-221X	MG R	220Ω 1/16W J
	R1888	NRS463J-222X	MG R	2.2kΩ 1/16W J
	R1889	NRS463J-103X	MG R	10kΩ 1/16W J
	R1891	NRS463J-221X	MG R	220Ω 1/16W J
	R1892	NRS463J-221X	MG R	220Ω 1/16W J
	R1893	NRS463J-221X	MG R	220Ω 1/16W J
	R1894	NRS463J-221X	MG R	220Ω 1/16W J
	R1895	NRS463J-221X	MG R	220Ω 1/16W J
	R1896	NRS463J-563X	MG R	56kΩ 1/16W J
	R1897	NRS463J-563X	MG R	56kΩ 1/16W J
	R1901	NRS463J-471X	MG R	470Ω 1/16W J
	R1902	NRS463J-182X	MG R	1.8kΩ 1/16W J
	R1904	NRS402F-222X	MG R	2.2kΩ 1/10W F

△ Symbol No.	Part No.	Part Name	Description
RESISTOR			
R1905	NRSA02F-222X	MG R	2.2kΩ 1/10W F
R1907	NRSA63J-0R0X	MG R	0.0Ω 1/16W J
R1908	NRSA63J-183X	MG R	18kΩ 1/16W J
R1931	NRSA63J-332X	MG R	3.3kΩ 1/16W J
R1932	NRSA63J-101X	MG R	100Ω 1/16W J
R1933	NRSA63J-683X	MG R	68kΩ 1/16W J
R1935	QRT09J-8R2	MF R	8.2Ω 3W J
R1936	QRL09J-100	OM R	10Ω 3W J
R1941	QRK126J-5R6X	C R	5.6Ω 1/2W J
R1942	NRSA63J-152X	MG R	1.5kΩ 1/16W J
R1943	NRSA63J-152X	MG R	1.5kΩ 1/16W J
R1944	QRK126J-220X	C R	22Ω 1/2W J
R1945	NRSA63J-102X	MG R	1kΩ 1/16W J
R1946	NRSA63J-102X	MG R	1kΩ 1/16W J
R1947	NRSA63J-152X	MG R	1.5kΩ 1/16W J
R1949	NRSA02F-122X	MG R	1.2kΩ 1/10W F
R1950	NRSA63J-822X	MG R	8.2kΩ 1/16W J
R1952	NRSA63J-0R0X	MG R	0.0Ω 1/16W J
R1953	NRSA63J-224X	MG R	220kΩ 1/16W J
R1954	NRSA63J-473X	MG R	47kΩ 1/16W J
R1955	NRSA63J-473X	MG R	47kΩ 1/16W J
R1959	NRSA02F-182X	MG R	1.8kΩ 1/10W F
R1961	NRSA63J-821X	MG R	820Ω 1/16W J
R1962	NRSA63J-682X	MG R	6.8kΩ 1/16W J
R1963	NRSA63J-182X	MG R	1.8kΩ 1/16W J
R1964	NRSA63J-223X	MG R	22kΩ 1/16W J
R1965	NRSA63J-821X	MG R	820Ω 1/16W J
R1966	NRSA63J-123X	MG R	12kΩ 1/16W J
R1967	NRSA63J-122X	MG R	1.2kΩ 1/16W J
R1968	NRSA63J-821X	MG R	820Ω 1/16W J
R1969	NRSA63J-821X	MG R	820Ω 1/16W J
R1981	QRG01GJ-181	OM R	180Ω 1W J
R1986	QRG01GJ-331	OM R	330Ω 1W J
R1991	NRSA63J-273X	MG R	27kΩ 1/16W J
R1992	NRSA63J-123X	MG R	12kΩ 1/16W J
R1993	NRSA63J-123X	MG R	12kΩ 1/16W J
R1994	NRSA63J-333X	MG R	33kΩ 1/16W J
R1996	NRSA63J-101X	MG R	100Ω 1/16W J
R1997	NRSA63J-101X	MG R	100Ω 1/16W J
R1998	NRSA63J-101X	MG R	100Ω 1/16W J

CAPACITOR			
C1001	QETN0JM-108Z	E CAP.	1000μF 6.3V M
C1002	NCF31AZ-105X	C CAP.	1μF 10V Z
C1003	NCF31AZ-105X	C CAP.	1μF 10V Z
C1011	NDC31HJ-100X	C CAP.	100pF 50V J
C1012	NCF31CZ-104X	C CAP.	0.1μF 16V Z
C1013	NDC31HJ-5R0X	C CAP.	5.0pF 50V J
C1021	NCF11EZ-105X	C CAP.	1μF 25V Z
C1102	QETN1CM-477Z	E CAP.	470μF 16V M
C1103	QETN1HM-106Z	E CAP.	10μF 50V M
C1104	QETN1HM-106Z	E CAP.	10μF 50V M
C1108	QETN1HM-106Z	E CAP.	10μF 50V M
C1131	QETN1EM-476Z	E CAP.	47μF 25V M
C1132	QETN1EM-476Z	E CAP.	47μF 25V M
C1133	QETN1EM-476Z	E CAP.	47μF 25V M
C1134	NCF11EZ-105X	C CAP.	1μF 25V Z
C1135	NCB11CK-105X	C CAP.	1μF 16V K
C1136	NCB11CK-105X	C CAP.	1μF 16V K
C1137	NCB11CK-105X	C CAP.	1μF 16V K
C1138	QRN143J-0R0X	C R	0.0Ω 1/4W J
C1139	QRN143J-0R0X	C R	0.0Ω 1/4W J
C1140	QRN143J-0R0X	C R	0.0Ω 1/4W J
C1148	NCB31EK-104X	C CAP.	0.1μF 25V K
C1149	QETN1CM-107Z	E CAP.	100μF 16V M
C1150	NCF21CZ-105X	C CAP.	1μF 16V Z
C1151	NCF21CZ-105X	C CAP.	1μF 16V Z
C1152	NCF21CZ-105X	C CAP.	1μF 16V Z
C1160	QETN1CM-107Z	E CAP.	100μF 16V M

CAPACITOR			
C1162	NCB31EK-104X	C CAP.	0.1μF 25V K
C1173	NCB11CK-105X	C CAP.	1μF 16V K
C1174	NCB11CK-105X	C CAP.	1μF 16V K
C1175	NCB11CK-105X	C CAP.	1μF 16V K
C1176	NCB31HK-103X	C CAP.	0.01μF 50V K
C1177	NCB31HK-103X	C CAP.	0.01μF 50V K
C1178	NCB31HK-103X	C CAP.	0.01μF 50V K
C1213	QETN1CM-107Z	E CAP.	100μF 16V M
C1214	QETN1HM-225Z	E CAP.	2.2μF 50V M
C1215	QFLC1HJ-103Z	M CAP.	0.01μF 50V J
C1216	NCF11CZ-475X	C CAP.	4.7μF 16V Z
C1218	QENCLHM-105Z	E CAP.	1μF 50V M
C1219	NCF11CZ-475X	C CAP.	4.7μF 16V Z
C1233	NDC31HJ-180X	C CAP.	180pF 50V J
C1241	NCF31CZ-104X	C CAP.	0.1μF 16V Z
C1242	NCF31CZ-104X	C CAP.	0.1μF 16V Z
C1243	QETN1CM-476Z	E CAP.	47μF 16V M
C1244	NCF31CZ-104X	C CAP.	0.1μF 16V Z
C1245	QETN1CM-476Z	E CAP.	47μF 16V M
C1250	NCF31CZ-104X	C CAP.	0.1μF 16V Z
C1251	NCF31CZ-104X	C CAP.	0.1μF 16V Z
C1252	QENCLHM-106Z	BP E CAP.	10μF 25V M
C1253	NCB31HK-103X	C CAP.	0.01μF 50V K
C1254	QETN1CM-227Z	E CAP.	220μF 16V M
C1255	QETN1HM-474Z	E CAP.	0.47μF 50V M
C1256	NCB11CK-105X	C CAP.	1μF 16V K
C1259	NCF31CZ-104X	C CAP.	0.1μF 16V Z
C1260	NCF31CZ-104X	C CAP.	0.1μF 16V Z
C1261	NDC31HJ-150X	C CAP.	150pF 50V J
C1262	NDC31HJ-471X	C CAP.	470pF 50V J
C1263	NCB31HK-103X	C CAP.	0.01μF 50V K
C1264	NDC31HJ-101X	C CAP.	100pF 50V J
C1265	NDC31HJ-101X	C CAP.	100pF 50V J
C1266	NCF31CZ-104X	C CAP.	0.1μF 16V Z
C1269	QETN1HM-475Z	E CAP.	4.7μF 50V M
C1270	QETN1HM-474Z	E CAP.	0.47μF 50V M
C1271	QETN1HM-474Z	E CAP.	0.47μF 50V M
C1272	QETN1HM-105Z	E CAP.	1μF 50V M
C1273	NCB31HK-472X	C CAP.	4700pF 50V K
C1275	QETN1HM-105Z	E CAP.	1μF 50V M
C1276	QETN1CM-227Z	E CAP.	220μF 16V M
C1277	NCB31HK-103X	C CAP.	0.01μF 50V K
C1278	NCB31HK-103X	C CAP.	0.01μF 50V K
C1301	QENCLHM-105Z	E CAP.	1μF 50V M
C1302	QENCLHM-105Z	E CAP.	1μF 50V M
C1303	QENCLHM-105Z	E CAP.	1μF 50V M
C1304	QETN1HM-105Z	E CAP.	1μF 50V M
C1305	NCF11CZ-475X	C CAP.	4.7μF 16V Z
C1306	QETN1AM-477Z	E CAP.	470μF 10V M
C1307	NCB31HK-472X	C CAP.	4700pF 50V K
C1308	NCB31CK-104X	C CAP.	0.1μF 16V K
C1309	NCB31CK-104X	C CAP.	0.1μF 16V K
C1310	NCB31CK-104X	C CAP.	0.1μF 16V K
C1311	NCB31CK-104X	C CAP.	0.1μF 16V K
C1312	NCB31CK-104X	C CAP.	0.1μF 16V K
C1313	NCB31CK-104X	C CAP.	0.1μF 16V K
C1315	NCB31HK-472X	C CAP.	4700pF 50V K
C1316	NCB31HK-472X	C CAP.	4700pF 50V K
C1317	QETN1CM-227Z	E CAP.	220μF 16V M
C1318	QETN1HM-225Z	E CAP.	2.2μF 50V M
C1319	QETN1HM-105Z	E CAP.	1μF 50V M
C1320	QETN1HM-475Z	E CAP.	4.7μF 50V M
C1321	QETN1HM-335Z	E CAP.	3.3μF 50V M
C1322	QETN1HM-335Z	E CAP.	3.3μF 50V M
C1323	QETN1HM-335Z	E CAP.	3.3μF 50V M
C1325	NCB11CK-105X	C CAP.	1μF 16V K
C1326	NCB11CK-105X	C CAP.	1μF 16V K
C1327	NCB11CK-105X	C CAP.	1μF 16V K
C1329	NCB31HK-103X	C CAP.	0.01μF 50V K
C1332	NCB21AK-105X	C CAP.	1μF 10V K
C1333	NCB21AK-105X	C CAP.	1μF 10V K
C1334	NCB21AK-105X	C CAP.	1μF 10V K
C1335	QETN1EM-476Z	E CAP.	47μF 25V M
C1336	NCB31HK-472X	C CAP.	4700pF 50V K

△ Symbol No.	Part No.	Part Name	Description
CAPACITOR			
C1339	NCF11CZ-475X	C CAP.	4.7μF 16V Z
C1341	NCF11EZ-105X	C CAP.	1μF 25V Z
C1342	NCF11EZ-105X	C CAP.	1μF 25V Z
C1343	NCF11EZ-105X	C CAP.	1μF 25V Z
C1344	NCF11EZ-105X	C CAP.	1μF 25V Z
C1345	NCF11EZ-105X	C CAP.	1μF 25V Z
C1346	NCF11EZ-105X	C CAP.	1μF 25V Z
C1351	NCF31AZ-105X	C CAP.	1μF 10V Z
C1352	NDC31HJ-151X	C CAP.	150pF 50V J
C1357	NCB31HK-102X	C CAP.	1000pF 50V K
C1358	NDC31HJ-100X	C CAP.	10pF 50V J
C1359	NCB31HK-472X	C CAP.	4700pF 50V K
C1361	QETNLM-226Z	E CAP.	22μF 50V M
C1362	NCB31CK-563X	C CAP.	0.056μF 16V K
C1363	QETNLM-226Z	E CAP.	22μF 50V M
C1364	NCB31CK-104X	C CAP.	0.1μF 16V K
C1366	NCF11EZ-105X	C CAP.	1μF 25V Z
C1386	NCF31AZ-105X	C CAP.	1μF 10V Z
C1391	NCF31AZ-105X	C CAP.	1μF 10V Z
C1401	QETNLM-477Z	E CAP.	470μF 10V M
C1402	QETNOJM-108Z	E CAP.	1000μF 6.3V M
C1403	QETNLCM-107Z	E CAP.	100μF 16V M
C1404	QETNLM-108Z	E CAP.	1000μF 10V M
C1405	QETNOJM-108Z	E CAP.	1000μF 6.3V M
C1409	QETNLM-106Z	E CAP.	10μF 50V M
C1410	NCB31CK-104X	C CAP.	0.1μF 16V K
C1411	NCB31CK-104X	C CAP.	0.1μF 16V K
C1413	NCB31HK-103X	C CAP.	0.01μF 50V K
C1414	QETNLEM-476Z	E CAP.	47μF 25V M
C1415	NCB31HK-103X	C CAP.	0.01μF 50V K
C1416	QETNLEM-476Z	E CAP.	47μF 25V M
C1417	NCB31HK-103X	C CAP.	0.01μF 50V K
C1418	QETNLEM-476Z	E CAP.	47μF 25V M
C1424	QETNLCM-336Z	E CAP.	33μF 16V M
C1425	QETNLCM-336Z	E CAP.	33μF 16V M
C1426	QETNLCM-336Z	E CAP.	33μF 16V M
C1428	QRN143J-OROX	C R	0.00 1/4W J
C1429	QRN143J-OROX	C R	0.00 1/4W J
C1438	NCB31HK-103X	C CAP.	0.01μF 50V K
C1442	NCB31HK-103X	C CAP.	0.01μF 50V K
C1444	NCB11CK-225X	C CAP.	2.2μF 16V K
C1445	NCB31HK-103X	C CAP.	0.01μF 50V K
C1446	NCB31HK-102X	C CAP.	1000pF 50V K
C1447	NDC31HJ-151X	C CAP.	150pF 50V J
C1449	NDC31HJ-560X	C CAP.	56pF 50V J
C1450	NCB31HK-103X	C CAP.	0.01μF 50V K
C1451	NCB31HK-103X	C CAP.	0.01μF 50V K
C1452	NCB31HK-102X	C CAP.	1000pF 50V K
C1453	NCB31AK-474X	C CAP.	0.47μF 10V K
C1454	NCB11CK-225X	C CAP.	2.2μF 16V K
C1480	NCB31HK-103X	C CAP.	0.01μF 50V K
C1481	NCB31HK-103X	C CAP.	0.01μF 50V K
C1482	NCB11CK-225X	C CAP.	2.2μF 16V K
C1483	NCB31HK-103X	C CAP.	0.01μF 50V K
C1484	NCB31HK-103X	C CAP.	0.01μF 50V K
C1485	NCB31HK-102X	C CAP.	1000pF 50V K
C1486	NDC31HJ-151X	C CAP.	150pF 50V J
C1487	NCB31HK-102X	C CAP.	1000pF 50V K
C1488	NDC31HJ-780X	C CAP.	7.0pF 50V J
C1489	NDC31HJ-560X	C CAP.	56pF 50V J
C1490	NCB31HK-103X	C CAP.	0.01μF 50V K
C1491	NCB11CK-225X	C CAP.	2.2μF 16V K
C1501	NCB31EK-104X	C CAP.	0.1μF 25V K
C1502	QETNLEM-476Z	E CAP.	47μF 25V M
C1519	QETNLEM-476Z	E CAP.	47μF 25V M
C1520	NDC31HJ-100X	C CAP.	10pF 50V J
C1521	QENCLCM-336Z	E CAP.	33μF 16V M
C1522	NCB31HK-103X	C CAP.	0.01μF 50V K
C1532	QETNLM-226Z	E CAP.	22μF 50V M
C1539	QETNLM-106Z	E CAP.	10μF 50V M
C1560	NCF11EZ-105X	C CAP.	1μF 25V Z
C1579	QETNLEM-476Z	E CAP.	47μF 25V M
C1582	QENCLCM-336Z	E CAP.	33μF 16V M
C1583	NCB11CK-225X	C CAP.	2.2μF 16V K
C1663	NRS463J-OROX	MG R	0.00 1/16W J
C1665	NRS463J-OROX	MG R	0.00 1/16W J

△ Symbol No.	Part No.	Part Name	Description
CAPACITOR			
C1667	QETNLM-106Z	E CAP.	10μF 50V M
C1668	NDC31HJ-101X	C CAP.	100pF 50V J
C1669	NCB11CK-105X	C CAP.	1μF 16V K
C1670	QETNLM-106Z	E CAP.	10μF 50V M
C1671	NDC31HJ-101X	C CAP.	100pF 50V J
C1672	NCB11CK-105X	C CAP.	1μF 16V K
C1673	QETNLM-107Z	E CAP.	100μF 50V M
C1674	QETNLM-228	E CAP.	2200μF 35V M
C1675	QFV71HJ-124Z	MF CAP.	0.12μF 50V J
C1676	QFV71HJ-124Z	MF CAP.	0.12μF 50V J
C1677	QETNLEM-108Z	E CAP.	1000μF 25V M
C1678	QETNLEM-108Z	E CAP.	1000μF 25V M
C1679	QETNLM-475Z	E CAP.	4.7μF 50V M
C1680	QETNLM-106Z	E CAP.	10μF 50V M
C1696	QETNLM-106Z	E CAP.	10μF 50V M
C1697	QETNLEM-476Z	E CAP.	47μF 25V M
C1701	NCB31EK-104X	C CAP.	0.1μF 25V K
C1702	NCB11CK-225X	C CAP.	2.2μF 16V K
C1703	QETNLEM-476Z	E CAP.	47μF 25V M
C1704	NCB11CK-225X	C CAP.	2.2μF 16V K
C1706	NCB11CK-105X	C CAP.	1μF 16V K
C1708	NDC31HJ-470X	C CAP.	47pF 50V J
C1709	NDC31HJ-101X	C CAP.	100pF 50V J
C1710	NCB31EK-104X	C CAP.	0.1μF 25V K
C1711	NCF31CZ-104X	C CAP.	0.1μF 16V Z
C1712	QETNLM-106Z	E CAP.	10μF 50V M
C1715	NDC31HJ-102X	C CAP.	1000pF 50V J
C1716	NCB31HK-103X	C CAP.	0.01μF 50V K
C1717	NCF31CZ-104X	C CAP.	0.1μF 16V Z
C1718	QETNLEM-476Z	E CAP.	47μF 25V M
C1719	QETNLM-475Z	E CAP.	4.7μF 50V M
C1720	NDC31HJ-102X	C CAP.	1000pF 50V J
C1721	NCB31HK-103X	C CAP.	0.01μF 50V K
C1722	QETNLM-475Z	E CAP.	4.7μF 50V M
C1723	NCB31HK-152X	C CAP.	1500pF 50V K
C1724	QETNLM-105Z	E CAP.	1μF 50V M
C1725	NDC31HJ-470X	C CAP.	47pF 50V J
C1726	QETNLM-105Z	E CAP.	1μF 50V M
C1727	QETNLM-105Z	E CAP.	1μF 50V M
C1728	NCB21AK-105X	C CAP.	1μF 10V K
C1729	QETNLEM-476Z	E CAP.	47μF 25V M
C1730	QETNLM-105Z	E CAP.	1μF 50V M
C1731	QETNLM-105Z	E CAP.	1μF 50V M
C1732	NCB31HK-103X	C CAP.	0.01μF 50V K
C1733	QETNLM-475Z	E CAP.	4.7μF 50V M
C1734	NDC31HJ-470X	C CAP.	47pF 50V J
C1735	NCB31HK-153X	C CAP.	0.015μF 50V K
C1743	NDC31HJ-880X	C CAP.	8.0pF 50V J
C1744	NDC31HJ-880X	C CAP.	8.0pF 50V J
C1745	NCB31HK-153X	C CAP.	0.015μF 50V K
C1752	NCB11CK-105X	C CAP.	1μF 16V K
C1754	NCB31HK-122X	C CAP.	1200pF 50V K
C1755	QETNLM-105Z	E CAP.	1μF 50V M
C1756	NCB31HK-122X	C CAP.	1200pF 50V K
C1757	QETNLM-105Z	E CAP.	1μF 50V M
C1801	NDC31HJ-391X	C CAP.	390pF 50V J
C1802	QETNLM-106Z	E CAP.	10μF 50V M
C1901	QETNLEM-107Z	E CAP.	100μF 25V M
C1902	QETNLCM-107Z	E CAP.	100μF 16V M
C1908	QETNLCM-107Z	E CAP.	100μF 16V M
C1909	QETNLCM-107Z	E CAP.	100μF 16V M
C1932	QETNLEM-476Z	E CAP.	47μF 25V M
C1941	QETNLM-108Z	E CAP.	1000μF 35V M
C1942	QETNLCM-108Z	E CAP.	1000μF 16V M
C1944	QETNLM-108Z	E CAP.	1000μF 35V M
C1945	QEZ0256-128	E CAP.	1200μF 10V M
C1947	QETNLCM-477Z	E CAP.	470μF 16V M
C1948	QETNLCM-477Z	E CAP.	470μF 16V M
C1949	QETNOJM-108Z	E CAP.	1000μF 6.3V M
C1950	QETNOJM-108Z	E CAP.	1000μF 6.3V M
C1951	QETNLM-108Z	E CAP.	1000μF 35V M
C1952	QEZ0256-128	E CAP.	1200μF 10V M
C1953	QETNOJM-108Z	E CAP.	1000μF 6.3V M
C1954	QETNOJM-108Z	E CAP.	1000μF 6.3V M
C1957	QETNOJM-108Z	E CAP.	1000μF 6.3V M
C1958	QETNOJM-228Z	E CAP.	2200μF 6.3V M

Symbol No.	Part No.	Part Name	Description
CAPACITOR			
C1961	QETNLHM-105Z	E CAP.	1uF 50V M
C1988	NCB31HK-222X	C CAP.	2200pF 50V K
COIL			
L1101	QRN143J-0R0X	C R	0.0Ω 1/4W J
L1102	QRN143J-0R0X	C R	0.0Ω 1/4W J
L1211	QQL25CK-100Z	COIL	10uH K
L1243	NQL024J-100X	COIL	10uH K
L1244	NQL024J-100X	COIL	10uH K
L1401	QQL25CK-100Z	COIL	10uH K
L1402	QQL26AK-100Z	CHOKE COIL	
L1403	QRN143J-0R0X	C R	0.0Ω 1/4W J
L1404	QRN143J-0R0X	C R	0.0Ω 1/4W J
L1430	NQL085J-560X	INDUCTOR	
L1431	NQL085J-560X	INDUCTOR	
L1481	NQL085J-560X	INDUCTOR	
L1482	NQL085J-560X	INDUCTOR	
L1711	NQL085J-2R2X	INDUCTOR	
L1712	NQL085J-3R3X	INDUCTOR	
L1713	NQL085J-3R3X	INDUCTOR	
L1714	NQL085J-3R3X	INDUCTOR	
L1941	QQR1129-001	CHOKE COIL	
L1942	QQR1127-001	CHOKE COIL	
L1943	QQL50AK-330Z	CHOKE COIL	
L1944	QQL26AK-330Z	COIL	33uH K
L1945	QQL26AK-220Z	COIL	22uH K
L1946	QQL26AK-220Z	COIL	22uH K
L1947	QQR1127-001	CHOKE COIL	
L1948	QQL50AK-100Z	CHOKE COIL	
L1949	QQL26AK-220Z	COIL	22uH K
L1950	QQL26AK-820Z	COIL	82uH K
DIODE			
D1301	MA111-X	SI. DIODE	
D1302	MA111-X	SI. DIODE	
D1304	MA111-X	SI. DIODE	
D1305	MA111-X	SI. DIODE	
D1306	MA111-X	SI. DIODE	
D1308	MA8100/M/-X	ZENER DIODE	
D1352	MA111-X	SI. DIODE	
D1353	MA8150/M/-X	ZENER DIODE	
D1354	MA8030/H/-X	ZENER DIODE	
D1431	MA111-X	SI. DIODE	
D1432	MA111-X	SI. DIODE	
D1481	MA111-X	SI. DIODE	
D1482	MA111-X	SI. DIODE	
D1662	MA3330/L/-X	ZENER DIODE	
D1663	MA3330/L/-X	ZENER DIODE	
D1667	MA111-X	SI. DIODE	
D1668	MA111-X	SI. DIODE	
D1669	MA111-X	SI. DIODE	
D1701	1SR35-400A-T2	DIODE	
D1702	MA111-X	SI. DIODE	
D1704	MA111-X	SI. DIODE	
D1708	MA111-X	SI. DIODE	
D1709	MA111-X	SI. DIODE	
D1710	MA111-X	SI. DIODE	
D1711	MA111-X	SI. DIODE	
D1713	MA111-X	SI. DIODE	
D1714	MA111-X	SI. DIODE	
D1715	MA111-X	SI. DIODE	
D1716	MA111-X	SI. DIODE	
D1718	MA111-X	SI. DIODE	
D1719	NRS463J-0R0X	MG R	0.0Ω 1/16W J
D1721	MA704A-X	S B DIODE	
D1722	MA704A-X	S B DIODE	
D1891	UDZ58.2B-X	ZENER DIODE	
D1892	UDZ58.2B-X	ZENER DIODE	
D1893	UDZ55.1B-X	ZENER DIODE	
D1894	UDZ55.1B-X	ZENER DIODE	
D1895	UDZ55.1B-X	ZENER DIODE	
D1901	1SR35-400A-T2	DIODE	
D1903	1SR35-400A-T2	DIODE	
D1931	MA111-X	SI. DIODE	
D1932	MA111-X	SI. DIODE	

Symbol No.	Part No.	Part Name	Description
DIODE			
D1933	UDZ55.1B-X	ZENER DIODE	
D1941	RK34-LFC4	S B DIODE	
D1942	SF554	S B DIODE	
D1943	SF554	S B DIODE	
D1962	MA3030/H/-X	ZENER DIODE	
D1964	MA111-X	SI. DIODE	
D1965	MA111-X	SI. DIODE	
D1967	PTZ11B-X	ZENER DIODE	
D1968	PTZ6.8B-X	ZENER DIODE	
D1969	PTZ11B-X	ZENER DIODE	
D1970	MA111-X	SI. DIODE	
TRANSISTOR			
Q1001	2SC2412K/QR/-X	SI. TRANSISTOR	
Q1021	2SC2412K/QR/-X	SI. TRANSISTOR	
Q1151	2SC3837K/NP/-X	SI. TRANSISTOR	
Q1152	2SC3837K/NP/-X	SI. TRANSISTOR	
Q1153	2SC3837K/NP/-X	SI. TRANSISTOR	
Q1232	2SA1037AK/QR/-X	SI. TRANSISTOR	
Q1242	2SC2412K/QR/-X	SI. TRANSISTOR	
Q1243	2SC2412K/QR/-X	SI. TRANSISTOR	
Q1246	2SC2412K/QR/-X	SI. TRANSISTOR	
Q1248	2SA1037AK/QR/-X	SI. TRANSISTOR	
Q1249	2SA1037AK/QR/-X	SI. TRANSISTOR	
Q1301	2SA1022/BC/-X	SI. TRANSISTOR	
Q1302	2SA1022/BC/-X	SI. TRANSISTOR	
Q1303	2SA1022/BC/-X	SI. TRANSISTOR	
Q1304	2SC3837K/NP/-X	SI. TRANSISTOR	
Q1305	2SC3837K/NP/-X	SI. TRANSISTOR	
Q1306	2SC3837K/NP/-X	SI. TRANSISTOR	
Q1321	1MX1-XW	TRANSISTOR	
Q1323	2SC2412K/QR/-X	SI. TRANSISTOR	
Q1324	2SA1022/BC/-X	SI. TRANSISTOR	
Q1431	2SC2412K/QR/-X	SI. TRANSISTOR	
Q1432	2SA1037AK/QR/-X	SI. TRANSISTOR	
Q1433	2SC2412K/QR/-X	SI. TRANSISTOR	
Q1436	2SC2412K/QR/-X	SI. TRANSISTOR	
Q1437	2SC2412K/QR/-X	SI. TRANSISTOR	
Q1438	2SC2412K/QR/-X	SI. TRANSISTOR	
Q1439	2SA1037AK/QR/-X	SI. TRANSISTOR	
Q1481	2SC2412K/QR/-X	SI. TRANSISTOR	
Q1482	2SC2412K/QR/-X	SI. TRANSISTOR	
Q1483	2SC2412K/QR/-X	SI. TRANSISTOR	
Q1484	2SC2412K/QR/-X	SI. TRANSISTOR	
Q1485	2SA1037AK/QR/-X	SI. TRANSISTOR	
Q1505	2SC2412K/QR/-X	SI. TRANSISTOR	
Q1668	DTC144EKA-X	SI. TRANSISTOR	
Q1669	2SC2412K/QR/-X	SI. TRANSISTOR	
Q1672	2SC2412K/QR/-X	SI. TRANSISTOR	
Q1673	2SA1037AK/QR/-X	SI. TRANSISTOR	
Q1701	DTC144EKA-X	SI. TRANSISTOR	
Q1702	2SA1037AK/QR/-X	SI. TRANSISTOR	
Q1703	2SA1037AK/QR/-X	SI. TRANSISTOR	
Q1704	2SA1037AK/QR/-X	SI. TRANSISTOR	
Q1705	2SA1037AK/QR/-X	SI. TRANSISTOR	
Q1706	2SC2412K/QR/-X	SI. TRANSISTOR	
Q1707	2SC2412K/QR/-X	SI. TRANSISTOR	
Q1710	2SC2412K/QR/-X	SI. TRANSISTOR	
Q1711	2SC2412K/QR/-X	SI. TRANSISTOR	
Q1714	2SC2785/JH/-T	SI. TRANSISTOR	
Q1715	2SA1037AK/QR/-X	SI. TRANSISTOR	
Q1931	2SC2412K/QR/-X	SI. TRANSISTOR	
Q1961	2SC2412K/QR/-X	SI. TRANSISTOR	
Q1962	2SC2412K/QR/-X	SI. TRANSISTOR	
Q1964	2SC2412K/QR/-X	SI. TRANSISTOR	
Q1965	2SC2412K/QR/-X	SI. TRANSISTOR	
Q1981	2SC4682-T	TRANSISTOR	
Q1984	2SC4682-T	TRANSISTOR	
IC			
IC1001	TC74HC02AF-X	I. C.	
IC1002	TC74HC14AF-X	I. C.	
IC1011	TC7404F-X	I. C.	
IC1021	TC4666F-X	I. C.	
IC1131	MS2055FP-X	I. C.	
IC1151	MM1519XQ	I. C.	

Symbol No.	Part No.	Part Name	Description
IC			
IC1211	TA1318N	I.C.	
IC1212	TC7W08F-X	I.C.	
IC1241	CXA2019AQ	I.C.	
IC1242	TA78L09F-X	I.C.	
IC1301	AN5392FBQ	I.C.	
IC1302	CXA1875AM-X	I.C.	
IC1351	TC74HC4538AF-X	I.C.	
IC1431	TC4W66F-X	I.C.	
IC1501	CXA2069Q	I.C.	
IC1502	M62320FP-X	I.C.	
IC1511	PQ15RW11	I.C.	
IC1521	CE42599-002	COMB FILTER	
IC1560	BU208F-X	I.C.	
IC1661	AN5277	I.C.	
IC1701	MN102H57KPB	I.C.	
IC1702	S-80828CLNB-W	I.C.	
IC1703	AT24C32-48WP30	I.C.	(SERVICE)
IC1704	TA48M033F-X	I.C.	
IC1901	PQ12RF1	I.C.	
IC1903	BA1780ST	I.C.	
IC1903	AN7805F	I.C.	
IC1941	SI-8090S	I.C.	
IC1942	SI-8050S	I.C.	
IC1943	PQ1G2032FZ	I.C.	
IC1944	PQ070XH02Z-W	I.C.	
OTHERS			
CF1241	QAX0529-001	C RESONATOR	
CN1001	QGB1506L1-16	B TO B CONNECTOR	
CN1002	QGB1506L1-16	B TO B CONNECTOR	
CN1003	QGB1506L1-16	B TO B CONNECTOR	
CN1004	QGC2507C1-96	CARD EDGE	
CN1005	QGB1505J1-40	B TO B CONNECTOR	
CN1006	QGB1505J1-40	B TO B CONNECTOR	
CN1007	QGB1505J1-25	B TO B CONNECTOR	
CN1010	QGB1505J1-40	B TO B CONNECTOR	
K1151	NRS463J-OROX	MG R	0.002 1/16W J
K1703	NQR0199-004X	FERRITE BEADS	
K1704	NQR0413-003X	BEADS CORE	
K1705	NQR0413-003X	BEADS CORE	
K1943	CE42050-001Z	BEADS CORE	
K1944	CE42050-001Z	BEADS CORE	
LC1131	NQR0169-001X	EMI FILTER	
SL1211	CSB903F30-T2	C RESONATOR	
SL1701	QAX0248-001Z	C RESONATOR	
TU1101	QAU0206-001	TUNER	
X1241	CE41651-001Z	X-TAL	

POWER & DEF. P.W. BOARD ASS'Y

(SSB-2053A-M2)

Symbol No.	Part No.	Part Name	Description
RESISTOR			
R2201	QRA14CF-1803Y	MF R	180KΩ 1/4W F
R2202	QRA14CF-2703Y	MF R	270KΩ 1/4W F
R2208	QRA14CF-2703Y	MF R	270KΩ 1/4W F
R2401	QRE141J-562Y	C R	5.6KΩ 1/4W J
R2402	QRE141J-103Y	C R	10KΩ 1/4W J
R2408	QRE121J-180Y	C R	18Ω 1/2W J
R2404	QRA14CF-6801Y	MF R	6.8KΩ 1/4W F
R2405	QRA14CF-6801Y	MF R	6.8KΩ 1/4W F
R2406	QRA14CF-1002Y	MF R	10KΩ 1/4W F
R2407	QRA14CF-8200Y	MF R	820Ω 1/4W F
R2408	QRA14CF-8200Y	MF R	820Ω 1/4W F
R2409	QRL029J-221	OM R	220Ω 2W J
R2410	QRT029J-2R2	MF R	2.2Ω 2W J
R2411	QRE121J-8R2Y	C R	8.2Ω 1/2W J
R2412	QRE141J-472Y	C R	4.7KΩ 1/4W J
R2413	QRE141J-104Y	C R	100KΩ 1/4W J
R2415	QRE141J-154Y	C R	150KΩ 1/4W J
R2416	QRE141J-103Y	C R	10KΩ 1/4W J
R2418	QRE141J-222Y	C R	2.2KΩ 1/4W J
R2420	QRE141J-101Y	C R	100Ω 1/4W J
R2421	QRE141J-682Y	C R	6.8KΩ 1/4W J
R2430	QRE121J-101Y	C R	100Ω 1/2W J
R2431	QRE121J-101Y	C R	100Ω 1/2W J
R2432	QRE121J-101Y	C R	100Ω 1/2W J
R2501	QRE141J-471Y	C R	470Ω 1/4W J
R2502	QRE121J-123Y	C R	12KΩ 1/2W J
R2508	QRE121J-152Y	C R	1.5KΩ 1/2W J
R2504	QRL089J-272	OM R	2.7KΩ 3W J
R2505	QRL089J-332	OM R	3.3KΩ 3W J
R2506	QRE121J-5R6Y	C R	5.6Ω 1/2W J
R2512	QRL029J-331	OM R	330Ω 2W J
R2521	QRE141J-103Y	C R	10KΩ 1/4W J
R2522	QRE141J-103Y	C R	10KΩ 1/4W J
R2523	QRE141J-822Y	C R	8.2KΩ 1/4W J
R2524	QRE141J-682Y	C R	6.8KΩ 1/4W J
R2525	QRE141J-102Y	C R	1KΩ 1/4W J
R2526	QRE141J-470Y	C R	470Ω 1/4W J
R2531	QRL029J-102	OM R	1KΩ 2W J
R2532	QRL029J-820	OM R	820Ω 2W J
R2533	QRL029J-820	OM R	820Ω 2W J
R2534	QRE141J-102Y	C R	1KΩ 1/4W J
R2535	QRE141J-470Y	C R	470Ω 1/4W J
R2536	QRE141J-470Y	C R	470Ω 1/4W J
R2561	QRA14CF-4701Y	MF R	4.7KΩ 1/4W F
R2562	QRA14CF-5601Y	MF R	5.6KΩ 1/4W F
R2565	QRE141J-223Y	C R	22KΩ 1/4W J
R2591	QRF154K-3R3	UNF R	3.3Ω 15W K
R2701	QRL01EJ-220X	OM R	22Ω 1W J
R2702	QRE121J-123Y	C R	12KΩ 1/2W J
R2708	QRZ0056-103Z	COMP R	10KΩ 1/2W K
R2901	QRF154K-R51	UNF R	0.51Ω 15W K
R2902	QRG01GJ-470	OM R	47Ω 1W J
R2908	QRF154K-R51	UNF R	0.51Ω 15W K
R2910	QRE121J-152Y	C R	1.5KΩ 1/2W J
R2911	QRL029J-183	OM R	18KΩ 2W J
R2912	QRT029J-R18	MF R	0.18Ω 2W J
R2913	QRT029J-R18	MF R	0.18Ω 2W J
R2914	QRK126J-681X	C R	680Ω 1/2W J
R2916	QRT029J-R22	MF R	0.22Ω 2W J
R2917	QRK126J-332X	C R	3.3KΩ 1/2W J
R2918	QRE121J-152Y	C R	1.5KΩ 1/2W J
R2920	QRE121J-684Y	C R	680KΩ 1/2W J
R2941	QRL089J-333	OM R	33KΩ 3W J
R2944	QRE121J-222Y	C R	2.2KΩ 1/2W J
R2951	QRE141J-473Y	C R	47KΩ 1/4W J
R2952	QRE141J-222Y	C R	2.2KΩ 1/4W J
R2953	QRE121J-181Y	C R	180Ω 1/2W J
R2954	QRE121J-221Y	C R	220Ω 1/2W J
R2955	QRT089J-1R0	MF R	1.0Ω 3W J
R2959	QRE121J-121Y	C R	120Ω 1/2W J
R2960	QRE141J-473Y	C R	47KΩ 1/4W J
R2961	QRE141J-103Y	C R	10KΩ 1/4W J
R2962	QRE141J-472Y	C R	4.7KΩ 1/4W J
R2963	QRA14CF-4701Y	MF R	4.7KΩ 1/4W F

△ Symbol No.	Part No.	Part Name	Description
RESISTOR			
R2964	QRA14CF-4701Y	MF R	4.7kΩ 1/4W F
R2965	QRE141J-153Y	C R	15kΩ 1/4W J
R2966	QRE141J-473Y	C R	47kΩ 1/4W J
R2967	QRE141J-473Y	C R	47kΩ 1/4W J
R2968	QRA14CF-1802Y	MF R	18kΩ 1/4W F
R2972	QRA14CF-1101Y	MF R	1.1kΩ 1/4W F
R2973	QRA14CF-7501Y	MF R	7.5kΩ 1/4W F
R2975	QRE121J-223Y	C R	22kΩ 1/2W J
R2977	QRE141J-473Y	C R	47kΩ 1/4W J
R2978	QRE141J-333Y	C R	33kΩ 1/4W J
△ R2999	QRZ0111-685	C R	6.8MΩ 1/2W K

CAPACITOR			
C2201	QFV71HJ-334Z	MF CAP.	0.33μF 50V J
C2401	QETNLVM-108Z	E CAP.	1000μF 35V M
C2402	QFN31HJ-152Z	M CAP.	1500pF 50V J
C2408	QCS32HJ-180Z	C CAP.	18pF 500V J
C2404	QFLC2AJ-104Z	M CAP.	0.1μF 100V J
C2405	QFV71HJ-104Z	MF CAP.	0.1μF 50V J
C2406	QETNLVM-107Z	E CAP.	100μF 35V M
C2407	QETNLHM-105Z	E CAP.	1μF 50V M
C2408	QFLC2AJ-104Z	M CAP.	0.1μF 100V J
C2409	QETNLHM-106Z	E CAP.	10μF 50V M
C2411	QCB31HK-222Z	C CAP.	2200pF 50V K
C2412	QENCLCM-226Z	E CAP.	22μF 16V M
C2413	QENCLCM-226Z	E CAP.	22μF 16V M
C2416	QCB31HK-682Z	C CAP.	6800pF 50V K
C2417	QETNLVM-107Z	E CAP.	100μF 35V M
C2501	QCB32HK-331Z	C CAP.	330pF 500V K
C2502	QFN32DK-103	M CAP.	0.01μF 200V K
C2508	QFV71HJ-224Z	MF CAP.	0.22μF 50V J
△ C2506	QFZ0122-452	MPP CAP.	4500pF 1.8kVH±3%
△ C2507	QFZ0122-392	MPP CAP.	3900pF 1.8kVH±3%
C2508	QFP32JJ-153	PP CAP.	0.015μF 630V J
△ C2509	QFZ0128-154	MPP CAP.	0.15μF 400V±3%
△ C2510	QFZ0197-154	MPP CAP.	0.15μF 250V J
△ C2511	QFZ0128-254	MPP CAP.	0.25μF 400V±3%
C2513	QEZ0414-226	E CAP.	22μF 50V M
C2514	QCS32HJ-561	C CAP.	560pF 500V J
C2521	QCZ0122-681	C CAP.	680pF 2kV K
C2522	QCZ0122-681	C CAP.	680pF 2kV K
C2523	QFN32AJ-682Z	M CAP.	6800pF 100V J
C2524	QCS31HJ-470Z	C CAP.	47pF 50V J
C2525	QCB31HK-682Z	C CAP.	6800pF 50V K
C2527	QETNLEM-476Z	E CAP.	47μF 25V M
C2533	QCS32HJ-561	C CAP.	560pF 500V J
C2534	QFN32DK-222Z	M CAP.	2200pF 200V K
C2536	QFN32DK-222Z	M CAP.	2200pF 200V K
C2562	QETNLHM-475Z	E CAP.	4.7μF 50V M
C2591	QEZ0203-107	E CAP.	100μF 160V M
C2701	QFLC2AJ-273Z	M CAP.	0.027μF 100V J
C2801	QETNLEM-108Z	E CAP.	1000μF 25V M
C2802	QETNLEM-108Z	E CAP.	1000μF 25V M
C2808	QETNLEM-336	E CAP.	33μF 250V M
C2811	QETNLVM-107Z	E CAP.	100μF 35V M
△ C2902	QFZ9072-104	MF CAP.	0.1μF FAC250V K
△ C2904	QCZ9054-102	C CAP.	1000pF FAC250V Z
△ C2905	QCZ9054-102	C CAP.	1000pF FAC250V Z
△ C2906	QCZ9054-102	C CAP.	1000pF FAC250V Z
△ C2907	QEZ0572-128	E CAP.	1000μF 35V M
△ C2908	QCZ9054-102	C CAP.	1000pF FAC250V Z
C2912	QCZ0340-33Z	C CAP.	3300pF 2kV K
C2913	QFLC1HJ-471Z	M CAP.	470pF 50V J
C2914	QETNLHM-227Z	E CAP.	220μF 50V M
C2916	QCS31HJ-331Z	C CAP.	330pF 50V J
C2917	QFN31HJ-182Z	M CAP.	1800pF 50V J
C2918	QFV71HJ-104Z	MF CAP.	0.1μF 50V J
C2919	QFP32GJ-103Z	PP CAP.	0.01μF 400V J
C2920	QCZ0115-151Z	C CAP.	150pF 2kV K
C2930	QCS31HJ-181Z	C CAP.	180pF 50V J
C2931	QEZ0203-227	E CAP.	220μF 160V M
C2932	QETNLEM-228	E CAP.	2200μF 25V M
C2934	QETMLVM-228	E CAP.	2200μF 35V M
C2935	QETMLVM-228	E CAP.	2200μF 35V M

△ Symbol No.	Part No.	Part Name	Description
CAPACITOR			
C2937	QCZ0840-152	C CAP.	1500pF 2kV K
C2942	QETNLHM-105Z	E CAP.	1μF 50V M
C2943	QETNLHM-477Z	E CAP.	470μF 16V M
C2944	QETNLHM-227Z	E CAP.	220μF 16V M
C2945	QETMLVM-228	E CAP.	2200μF 35V M
C2946	QETNLVM-108Z	E CAP.	1000μF 35V M
C2954	QETNLHM-226Z	E CAP.	22μF 50V M
C2971	QETNLHM-107Z	E CAP.	100μF 16V M
C2972	QETNLEM-476Z	E CAP.	47μF 25V M
C2973	QETNLHM-106Z	E CAP.	10μF 50V M
△ C2998	QCZ9074-472	C CAP.	4700pF FAC250V M
△ C2999	QCZ9074-472	C CAP.	4700pF FAC250V M
△ C2995	QCZ9074-472	C CAP.	4700pF FAC250V M
△ C2997	QCZ9074-472	C CAP.	4700pF FAC250V M
△ C2998	QCZ9074-472	C CAP.	4700pF FAC250V M
△ C2999	QCZ9074-472	C CAP.	4700pF FAC250V M

TRANSF			
T2501	QOR1111-001	DRIVE TRANSF.	
△ T2502	QOH0113-002	FBT	
T2701	QOR1096-001	DEF TRANSF	
△ T2921	QOS0133-001	SW TRANSF.	

COIL			
L2501	QQL2025-180	CHOKE COIL	
L2502	QOR1230-001	CHOKE COIL	
L2504	QOR0815-003	LINEARITY COIL	
L2531	QQL48AJ-222	COIL	2.2mH J
L2701	QQL48AJ-222	COIL	2.2mH J
L2801	QQL2026-140	HEATER CHOKE	
L2931	QQL26AK-470Z	COIL	47μH K
L2933	QQL26AK-470Z	COIL	47μH K
L2934	QQL2018-220	HEATER CHOKE	
L2935	QQL60AK-220	INDUCTOR	
L2936	QQL26AK-220Z	COIL	22μH K

DIODE			
D2201	1SR35-400A-T2	DIODE	
D2401	MTZJ75-T2	ZENER DIODE	
D2402	1SR35-400A-T2	DIODE	
D2403	1SS133-T2	SI. DIODE	
D2404	MTZJ9.1B-T2	ZENER DIODE	
D2405	1SS133-T2	SI. DIODE	
D2406	MTZJ6.8C-T2	ZENER DIODE	
D2407	1SR35-400A-T2	DIODE	
D2501	1SS81-T5	SI. DIODE	
D2504	RG2A-LFC4	SI. DIODE	
D2505	V11CA-C1	SI. DIODE	
D2506	FMV-3FU-F1	SI. DIODE	
D2521	MTZJ12C-T2	ZENER DIODE	
D2522	1SS81-T5	SI. DIODE	
D2531	RGPI0J-5025-T3	SI. DIODE	
D2561	MTZJ7.5S-T2	ZENER DIODE	
D2562	MTZJ7.5S-T2	ZENER DIODE	
D2583	1SS133-T2	SI. DIODE	
D2801	EU2-T3	SI. DIODE	
D2802	EU2-T3	SI. DIODE	
D2803	RU30A-F1	SI. DIODE	
D2811	1SR124-400A-T2	SI. DIODE	
△ D2901	RBV-606	BRIDGE DIODE	
D2910	MA700A-T2	S B DIODE	
D2911	RGPI0J-5025-T3	SI. DIODE	
D2912	AU01Z-T2	SI. DIODE	
D2913	AU01Z-T2	SI. DIODE	
D2914	1SS133-T2	SI. DIODE	
D2915	SARS01-T2	DIODE	
D2916	1SS133-T2	SI. DIODE	
D2917	MTZJ27B-T2	ZENER DIODE	
D2918	MTZJ5.1B-T2	ZENER DIODE	
D2920	1SS133-T2	SI. DIODE	
D2931	RU4M-F1	SI. DIODE	
D2932	RU30A-F1	SI. DIODE	
D2934	RU4M-F1	SI. DIODE	
D2935	RU3Y-LFC4	SI. DIODE	

Symbol No.	Part No.	Part Name	Description
------------	----------	-----------	-------------

DIODE

D2936	FMX-G12S	SI. DIODE
D2937	EU2-T3	SI. DIODE
D2938	FMX-G12S	SI. DIODE
D2941	MTZJ33B-T2	ZENER DIODE
D2952	MTZJ12C-T2	ZENER DIODE
D2953	1SS244-T2	SI. DIODE
D2954	1SS133-T2	SI. DIODE
D2956	1SS133-T2	SI. DIODE
D2958	MTZJ6.8C-T2	ZENER DIODE
D2959	1SS133-T2	SI. DIODE
D2972	MTZJ15B-T2	ZENER DIODE
D2973	1SS133-T2	SI. DIODE

TRANSISTOR

Q2401	2SC3311A/QR/-T	SI. TRANSISTOR	
Q2402	2SC3311A/QR/-T	SI. TRANSISTOR	
Q2501	BSN304-T	F.E.T.	
Q2503	2SC5552-RL	POWER TRANSISTOR	H. OUT
Q2521	2SC3311A/QR/-T	SI. TRANSISTOR	
Q2531	IRF1620G	F.E.T.	
Q2532	2SC1959/Y/-T	SI. TRANSISTOR	
Q2533	2SA962TM/Y/-T	SI. TRANSISTOR	
Q2951	2SC1627A/Y/-T	SI. TRANSISTOR	
Q2952	2SC3311A/QR/-T	SI. TRANSISTOR	
Q2953	2SC3311A/QR/-T	SI. TRANSISTOR	
Q2954	2SC3311A/QR/-T	SI. TRANSISTOR	
Q2971	2SA1208/ST/Z1-T	SI. TRANSISTOR	

IC

IC2401	LA7876NZ	I.C.
IC2911	STR-F6629B/F7	I.C.
IC2921	SE140N	I.C.

OTHERS

CN2001	QGB1506M1-16	B TO B CONNECTOR	
CN2002	QGB1506M1-16	B TO B CONNECTOR	
CN2003	QGB1506M1-16	B TO B CONNECTOR	
CN2010	QGB1505J1-35	B TO B CONNECTOR	
CP2934	ICP-N70-T	I.C. PROTECT	
CP2936	ICP-N38-Y	I.C. PROTECT	
CP2941	ICP-N70-T	I.C. PROTECT	
CP2942	ICP-N70-T	I.C. PROTECT	
CP2943	ICP-N20-Y	I.C. PROTECT	
F2905	QMF2034-5R0Z-J1	FUSE	5.0A
FR2801	QRZ9011-1R0	F R	1.0 Ω 1/2W J
FR2802	QRZ9011-1R0	F R	1.0 Ω 1/2W J
FR2811	QRZ9011-4R7	F R	4.7Ω 1/2W J
FR2915	QRZ9017-330	F R	33 Ω 1/4W J
K2401	QQR0621-002Z	BEADS CORE	
K2504	QQR0679-001	FERRITE BEADS	
K2505	QQR0679-001	FERRITE BEADS	
K2912	QQR0582-001Z	BEADS CORE	
K2914	QQR0582-001Z	BEADS CORE	
K2930	QQR0621-002Z	BEADS CORE	
K2931	QQR0621-002Z	BEADS CORE	
K2935	QQR0621-002Z	BEADS CORE	
K2937	QQR0621-002Z	BEADS CORE	
K2938	QQR0621-002Z	BEADS CORE	
PC2921	PC123F2	PHOTO COUPLER	
RY2951	QSK0118-001	RELAY	
RY2952	QSK0083-001	RELAY	
RY2952	or QSK0084-001	RELAY	

R CRT SOCKET P.W. BOARD ASS'Y (SSB-3153A-M2)

Symbol No.	Part No.	Part Name	Description
------------	----------	-----------	-------------

RESISTOR

R3005	QRE121J-105Y	C R	1MΩ 1/2W J
R3006	QRC121K-102Z	MF R	1kΩ 1/2W K
R3008	QRC121K-152Z	MF R	1.5kΩ 1/2W K
R3101	NRS463J-681X	MG R	680Ω 1/16W J
R3103	NRS463J-821X	MG R	820Ω 1/16W J
R3104	QRL039J-473	OM R	47kΩ 3W J
R3106	NRS463J-0R0X	MG R	0.Ω 1/16W J
R3107	NRS463J-0R0X	MG R	0.Ω 1/16W J
R3108	QRC121K-561Z	MF R	560Ω 1/2W K
R3110	NRS463J-0R0X	MG R	0.Ω 1/16W J

CAPACITOR

C3002	QETN2EM-106Z	E CAP.	10μF 250V M
C3006	QFZ9027-472	MF CAP.	4700pFAC125V K
C3007	QETN2EM-106Z	E CAP.	10μF 250V M
C3101	QETNL HM-106Z	E CAP.	10μF 50V M
C3102	NCB31HK-103X	C CAP.	0.01μF 50V K
C3103	QETNLEM-476Z	E CAP.	47μF 25V M
C3106	QFK62EK-104Z	MM CAP.	0.1μF 250V K
C3107	NDC31HJ-561X	C CAP.	560pF 50V J
C3108	NDC31HJ-100X	C CAP.	10pF 50V J

COIL

L3002	QQL26AJ-102Z	COIL	1mH J
-------	--------------	------	-------

DIODE

D3001	RM2C-LFA1	SI. DIODE
D3101	EU01N-T2	SI. DIODE
D3102	1SR124-400A-T2	SI. DIODE

IC

IC3101	TDAG111Q	I.C.
--------	----------	------

OTHERS

SG3001	CE42447-501	ARRESTOR
SK3001	CE42535-001J1	CRT SOCKET

G CRT SOCKET P.W. BOARD ASS'Y

(SSB-3253A-M2)

△ Symbol No.	Part No.	Part Name	Description
RESISTOR			
R3001	NRVA63D-123X	MF R	12kΩ 1/16W D
R3002	NRVA63D-223X	MF R	22kΩ 1/16W D
R3003	NRVA63D-472X	MF R	4.7kΩ 1/16W D
R3005	QRE121J-105Y	C R	1MΩ 1/2W J
R3006	QRC121K-102Z	MF R	1kΩ 1/2W K
R3008	QRC121K-152Z	MF R	1.5kΩ 1/2W K
R3013	NRSA63J-0R0X	MG R	0.0Ω 1/16W J
R3014	NRSA63J-0R0X	MG R	0.0Ω 1/16W J
R3101	NRSA63J-681X	MG R	680Ω 1/16W J
R3102	NRSA63J-182X	MG R	1.8kΩ 1/16W J
R3103	NRSA63J-821X	MG R	820Ω 1/16W J
R3104	QRL039J-473	OM R	47kΩ 3W J
R3105	NRSA63J-0R0X	MG R	0.0Ω 1/16W J
R3107	NRSA63J-103X	MG R	10kΩ 1/16W J
R3108	QRC121K-561Z	MF R	560Ω 1/2W K
R3110	NRSA63J-0R0X	MG R	0.0Ω 1/16W J

CAPACITOR

△ C3001	QETN2EM-106Z	E CAP.	10μF 250V M
C3002	QETN2EM-106Z	E CAP.	10μF 250V M
C3003	QFLCL1HJ-223Z	M CAP.	0.022μF 50V J
C3006	QFZ9027-472	MF CAP.	4700pFAC125V K
C3007	QETN2EM-106Z	E CAP.	10μF 250V M
C3101	QETN1HM-106Z	E CAP.	10μF 50V M
C3102	NCB31HK-103X	C CAP.	0.01μF 50V K
C3103	QETN1EM-476Z	E CAP.	47μF 25V M
C3105	NDC31HJ-120X	C CAP.	12pF 50V J
C3106	QFK62EK-104Z	MM CAP.	0.1μF 250V K
C3107	NDC31HJ-561X	C CAP.	560pF 50V J
C3108	NDC31HJ-100X	C CAP.	10pF 50V J

COIL

L3001	QQL26AJ-102Z	COIL	1mH J
L3002	QQL26AJ-102Z	COIL	1mH J
L3101	QQL244K-5R6Z	COIL	5.6μH K

DIODE

D3001	RM2C-LFA1	SI DIODE
D3101	EU01N-T2	SI DIODE
D3102	1SR124-400A-T2	SI DIODE

IC

IC3101	TDA6111Q	I.C.
--------	----------	------

OTHERS

△ FR3007	QRZ9009-1R5	F R	1.5 Ω 1/2W J
SG3001	CE42447-501	ARRESTOR	
△ SK3001	CE42535-001J1	CRT SOCKET	

B CRT SOCKET P.W. BOARD ASS'Y

(SSB-3353A-M2)

△ Symbol No.	Part No.	Part Name	Description
RESISTOR			
R3005	QRE121J-105Y	C R	1MΩ 1/2W J
R3006	QRC121K-102Z	MF R	1kΩ 1/2W K
R3008	QRC121K-152Z	MF R	1.5kΩ 1/2W K
R3031	NRVA63D-123X	MF R	12kΩ 1/16W D
R3032	NRVA63D-562X	MF R	5.6kΩ 1/16W D
R3033	NRSA63J-104X	MG R	100kΩ 1/16W J
R3101	NRSA63J-681X	MG R	680Ω 1/16W J
R3102	NRSA63J-332X	MG R	3.3kΩ 1/16W J
R3103	NRSA63J-821X	MG R	820Ω 1/16W J
R3104	QRL039J-473	OM R	47kΩ 3W J
R3105	NRSA63J-681X	MG R	680Ω 1/16W J
R3106	NRSA63J-0R0X	MG R	0.0Ω 1/16W J
R3107	NRSA63J-103X	MG R	10kΩ 1/16W J
R3108	QRC121K-561Z	MF R	560Ω 1/2W K
R3110	NRSA63J-0R0X	MG R	0.0Ω 1/16W J

CAPACITOR

C3002	QETN2EM-106Z	E CAP.	10μF 250V M
C3006	QFZ9027-472	MF CAP.	4700pFAC125V K
C3007	QETN2EM-106Z	E CAP.	10μF 250V M
C3101	QETN1HM-106Z	E CAP.	10μF 50V M
C3102	NCB31HK-103X	C CAP.	0.01μF 50V K
C3103	QETN1EM-476Z	E CAP.	47μF 25V M
C3105	NDC31HJ-270X	C CAP.	27pF 50V J
C3106	QFK62EK-104Z	MM CAP.	0.1μF 250V K
C3107	NDC31HJ-561X	C CAP.	560pF 50V J
C3108	NDC31HJ-100X	C CAP.	10pF 50V J
C3109	NDC31HJ-270X	C CAP.	27pF 50V J

COIL

L3002	QQL26AJ-102Z	COIL	1mH J
L3101	QQL244K-5R6Z	COIL	5.6μH K

DIODE

D3001	RM2C-LFA1	SI DIODE
D3101	EU01N-T2	SI DIODE
D3102	1SR124-400A-T2	SI DIODE
D3103	MA111-X	SI DIODE

TRANSISTOR

Q3031	2SA1037AK/QR/-X	SI TRANSISTOR
-------	-----------------	---------------

IC

IC3101	TDA6111Q	I.C.
--------	----------	------

OTHERS

SG3001	CE42447-501	ARRESTOR
△ SK3001	CE42535-001J1	CRT SOCKET

CONVERGENCE P.W. BOARD ASS'Y (SSB-5053A-M2)

Symbol No.	Part No.	Part Name	Description
RESISTOR			
R5801	NRS463J-272X	MG R	2.7kΩ 1/16W J
R5802	NRS463J-272X	MG R	2.7kΩ 1/16W J
R5803	NRS463J-272X	MG R	2.7kΩ 1/16W J
R5804	NRS463J-272X	MG R	2.7kΩ 1/16W J
R5805	NRS463J-272X	MG R	2.7kΩ 1/16W J
R5806	NRS463J-272X	MG R	2.7kΩ 1/16W J
R5807	NRS463J-272X	MG R	2.7kΩ 1/16W J
R5808	NRS463J-272X	MG R	2.7kΩ 1/16W J
R5809	QRE121J-471Y	C R	470Ω 1/2W J
R5810	NRS463J-122X	MG R	1.2kΩ 1/16W J
R5812	NRS463J-102X	MG R	1kΩ 1/16W J
R5813	NRS463J-102X	MG R	1kΩ 1/16W J
R5814	NRS463J-333X	MG R	33kΩ 1/16W J
R5815	NRS463J-473X	MG R	47kΩ 1/16W J
R5818	NRS463J-101X	MG R	100Ω 1/16W J
R5826	NRS463J-473X	MG R	47kΩ 1/16W J
R5827	NRS463J-103X	MG R	10kΩ 1/16W J
R5828	NRS463J-101X	MG R	100Ω 1/16W J
R5829	NRS463J-101X	MG R	100Ω 1/16W J
R5830	NRS463J-101X	MG R	100Ω 1/16W J
R5831	NRS463J-102X	MG R	1kΩ 1/16W J
R5832	NRS463J-102X	MG R	1kΩ 1/16W J
R5833	NRS463J-102X	MG R	1kΩ 1/16W J
R5834	NRS463J-473X	MG R	47kΩ 1/16W J
R5835	NRS463J-473X	MG R	47kΩ 1/16W J
R5836	NRS463J-473X	MG R	47kΩ 1/16W J
R5837	NRS463J-473X	MG R	47kΩ 1/16W J
R5838	NRS463J-473X	MG R	47kΩ 1/16W J
R5839	NRS463J-473X	MG R	47kΩ 1/16W J
R5840	NRS463J-332X	MG R	3.3kΩ 1/16W J
R5842	QRX01GJ-2R2	MF R	2.2Ω 1W J
R5843	QRL029J-221	OM R	220Ω 2W J
R5844	NRS463J-332X	MG R	3.3kΩ 1/16W J
R5846	QRX01GJ-1R5	MF R	1.5Ω 1W J
R5847	QRL029J-151	OM R	150Ω 2W J
R5848	NRS463J-332X	MG R	3.3kΩ 1/16W J
R5850	QRX01GJ-2R2	MF R	2.2Ω 1W J
R5851	QRL029J-221	OM R	220Ω 2W J
R5852	NRS463J-332X	MG R	3.3kΩ 1/16W J
R5854	QRX01GJ-1R5	MF R	1.5Ω 1W J
R5855	QRL029J-151	OM R	150Ω 2W J
R5856	NRS463J-332X	MG R	3.3kΩ 1/16W J
R5858	QRX01GJ-3R3	MF R	3.3Ω 1W J
R5859	QRL029J-221	OM R	220Ω 2W J
R5860	NRS463J-332X	MG R	3.3kΩ 1/16W J
R5862	QRX01GJ-1R8	MF R	1.8Ω 1W J
R5863	QRL029J-151	OM R	150Ω 2W J
R5864	NRS463J-101X	MG R	100Ω 1/16W J
R5899	NRS463J-0R0X	MG R	0.0Ω 1/16W J
C5801	QETN1CM-107Z	E CAP.	100μF 16V M
C5802	QETN1CM-107Z	E CAP.	100μF 16V M
C5803	QETN1CM-107Z	E CAP.	100μF 16V M
C5804	NCB31EK-104X	C CAP.	0.1μF 25V K
C5805	QETN1CM-107Z	E CAP.	100μF 16V M
C5806	NCB31EK-104X	C CAP.	0.1μF 25V K
C5807	QETN1CM-107Z	E CAP.	100μF 16V M
C5808	NCB31EK-104X	C CAP.	0.1μF 25V K
C5809	NCB31EK-104X	C CAP.	0.1μF 25V K
C5810	QETN1EM-107Z	E CAP.	100μF 25V M
C5813	NCB31EK-104X	C CAP.	0.1μF 25V K
C5814	NCB31EK-104X	C CAP.	0.1μF 25V K
C5815	NCB31HK-102X	C CAP.	1000pF 50V K
C5818	NCB31HK-103X	C CAP.	0.01μF 50V K
C5819	NCB31HK-103X	C CAP.	0.01μF 50V K
C5820	NDC31HJ-151X	C CAP.	150pF 50V J
C5821	NDC31HJ-151X	C CAP.	150pF 50V J
C5822	NDC31HJ-151X	C CAP.	150pF 50V J
C5823	NDC31HJ-151X	C CAP.	150pF 50V J
C5824	NDC31HJ-151X	C CAP.	150pF 50V J
C5825	NDC31HJ-151X	C CAP.	150pF 50V J
C5827	QETN1HM-477Z	E CAP.	470μF 50V M
C5828	QETN1HM-477Z	E CAP.	470μF 50V M
C5829	NDC31HJ-151X	C CAP.	150pF 50V J
C5830	NDC31HJ-151X	C CAP.	150pF 50V J
C5831	NDC31HJ-151X	C CAP.	150pF 50V J
C5832	NDC31HJ-151X	C CAP.	150pF 50V J

Symbol No.	Part No.	Part Name	Description
CAPACITOR			
C5833	NDC31HJ-151X	C CAP.	150pF 50V J
C5834	NDC31HJ-151X	C CAP.	150pF 50V J
C5838	NCB31EK-104X	C CAP.	0.1μF 25V K
C5843	NCB31HK-103X	C CAP.	0.01μF 50V K
COIL			
L5802	QQL521J-470	INDUCTOR	
DIODE			
D5804	1SR153-400-T2	SI. DIODE	
D5805	1SR153-400-T2	SI. DIODE	
D5816	RD33E/B2/-T2	ZENER DIODE	
D5817	RD33E/B2/-T2	ZENER DIODE	
D5818	RD33E/B2/-T2	ZENER DIODE	
D5819	RD33E/B2/-T2	ZENER DIODE	
D5820	RD33E/B2/-T2	ZENER DIODE	
D5821	RD33E/B2/-T2	ZENER DIODE	
D5822	RD33E/B2/-T2	ZENER DIODE	
D5823	RD33E/B2/-T2	ZENER DIODE	
D5824	RD33E/B2/-T2	ZENER DIODE	
D5825	RD33E/B2/-T2	ZENER DIODE	
D5826	RD33E/B2/-T2	ZENER DIODE	
D5827	RD33E/B2/-T2	ZENER DIODE	
D5839	NRS463J-0R0X	MG R	0.0Ω 1/16W J
D5841	PTZ6.8B-X	ZENER DIODE	
D5842	PTZ6.8B-X	ZENER DIODE	
D5843	PTZ6.8B-X	ZENER DIODE	
TRANSISTOR			
Q5801	2SC3852A	SI TRANSISTOR	
Q5802	2SA673/C/-T	SI TRANSISTOR	
Q5803	2SA673/C/-T	SI TRANSISTOR	
Q5806	2SD601A/QR/-X	SI TRANSISTOR	
Q5807	2SD601A/QR/-X	SI TRANSISTOR	
Q5808	2SD601A/QR/-X	SI TRANSISTOR	
Q5811	2SD601A/QR/-X	SI TRANSISTOR	
IC			
IC5801	BA17805T	I.C.	
IC5803	BA17805T	I.C.	
IC5804	STK392-110	I.C.	
IC5805	STK392-110	I.C.	
OTHERS			
CN5011	QGB2510J1-15	B TO B CONNECTOR	
CN5012	QGB2510J1-09	B TO B CONNECTOR	
K5801	QQR0621-002Z	BEADS CORE	
K5802	QQR0621-002Z	BEADS CORE	
K5803	QQR0621-002Z	BEADS CORE	
K5804	QQR0621-002Z	BEADS CORE	
K5805	QQR0621-002Z	BEADS CORE	
K5806	QQR0621-002Z	BEADS CORE	
K5807	QQR0621-002Z	BEADS CORE	
K5808	QQR0621-002Z	BEADS CORE	
K5809	QQR0621-002Z	BEADS CORE	
K5810	QQR0621-002Z	BEADS CORE	
K5811	QQR0621-002Z	BEADS CORE	
MD5001	QAL0382-003	CONVER MODULE	
S5801	QSW0619-003Z	PUSH SWITCH	

SERVICE SW

R VM P.W. BOARD ASS'Y (SSB-7153A-M2)

△ Symbol No.	Part No.	Part Name	Description
RESISTOR			
R7101	NRS463J-101X	MG R	100Ω 1/16W J
R7102	NRS463J-223X	MG R	22kΩ 1/16W J
R7103	NRS463J-332X	MG R	3.3kΩ 1/16W J
R7104	NRS463J-332X	MG R	3.3kΩ 1/16W J
R7105	NRS463J-391X	MG R	390Ω 1/16W J
R7106	NRS463J-471X	MG R	470Ω 1/16W J
R7107	NRS463J-392X	MG R	3.9kΩ 1/16W J
△ R7110	QRJ146J-182X	C R	1.8kΩ 1/4W J
R7111	NRS463J-104X	MG R	100kΩ 1/16W J
R7112	NRS463J-104X	MG R	100kΩ 1/16W J
△ R7113	QRJ146J-182X	C R	1.8kΩ 1/4W J
△ R7114	QRJ146J-470X	UNF C R	47Ω 1/4W J
△ R7115	QRJ146J-470X	UNF C R	47Ω 1/4W J
R7116	QRG01GJ-150	OM R	15Ω 1W J
R7117	NRS463J-104X	MG R	100kΩ 1/16W J
R7118	NRS463J-104X	MG R	100kΩ 1/16W J
R7119	QRG01GJ-180	OM R	18Ω 1W J
R7120	QRL09J-330	OM R	33Ω 3W J
R7121	QRL09J-330	OM R	33Ω 3W J
R7122	QRL09J-330	OM R	33Ω 3W J
R7124	NRS463J-101X	MG R	100Ω 1/16W J

CAPACITOR

C7101	NCB31HK-102X	C CAP.	1000pF 50V K
C7102	QETN1HM-106Z	E CAP.	10μF 50V M
C7103	NCF21HZ-104X	C CAP.	0.1μF 50V Z
C7104	NCB31HK-472X	C CAP.	4700pF 50V K
C7107	QFN32DK-103	M CAP.	0.01μF 200V K
C7108	QFN32DK-103	M CAP.	0.01μF 200V K
C7109	QETN2CM-106Z	E CAP.	10μF 160V M
C7110	QETN2CM-226Z	E CAP.	22μF 160V M
C7111	QETN2CM-226Z	E CAP.	22μF 160V M
C7112	QFN31HJ-222Z	M CAP.	2200pF 50V J
C7113	QFN31HJ-222Z	M CAP.	2200pF 50V J
C7116	QCS32HJ-330Z	C CAP.	33pF 500V J
C7117	QFN32DK-103	M CAP.	0.01μF 200V K
C7118	QFN32DK-103	M CAP.	0.01μF 200V K
C7119	QCB32HK-103	C CAP.	0.01μF 500V K
C7120	QCB32HK-102Z	C CAP.	1000pF 500V K

DIODE

D7101	1SS355-X	SI DIODE
D7102	RH15-T3	SI DIODE
D7103	RH15-T3	SI DIODE

TRANSISTOR

Q7101	2SC1906-T	SI TRANSISTOR
Q7102	2SA1005/MLK/-T	SI TRANSISTOR
Q7103	2SC1959/Y/-T	SI TRANSISTOR
Q7104	2SA562TM/Y/-T	SI TRANSISTOR
Q7105	2SJ403	F.E.T.
Q7106	IRF1620G	F.E.T.

OTHERS

K7101	CE41492-001Z	CHOKE COIL
LC7101	NQR0169-001X	EMI FILTER

G VM P.W. BOARD ASS'Y (SSB-7253A-M2)

△ Symbol No.	Part No.	Part Name	Description
RESISTOR			
R7101	NRS463J-101X	MG R	100Ω 1/16W J
R7102	NRS463J-223X	MG R	22kΩ 1/16W J
R7103	NRS463J-332X	MG R	3.3kΩ 1/16W J
R7104	NRS463J-332X	MG R	3.3kΩ 1/16W J
R7105	NRS463J-391X	MG R	390Ω 1/16W J
R7106	NRS463J-471X	MG R	470Ω 1/16W J
R7107	NRS463J-392X	MG R	3.9kΩ 1/16W J
△ R7110	QRJ146J-182X	C R	1.8kΩ 1/4W J
R7111	NRS463J-104X	MG R	100kΩ 1/16W J
R7112	NRS463J-104X	MG R	100kΩ 1/16W J
△ R7113	QRJ146J-182X	C R	1.8kΩ 1/4W J
△ R7114	QRJ146J-470X	UNF C R	47Ω 1/4W J
△ R7115	QRJ146J-470X	UNF C R	47Ω 1/4W J
R7116	QRG01GJ-150	OM R	15Ω 1W J
R7117	NRS463J-104X	MG R	100kΩ 1/16W J
R7118	NRS463J-104X	MG R	100kΩ 1/16W J
R7119	QRG01GJ-180	OM R	18Ω 1W J
R7120	QRL09J-330	OM R	33Ω 3W J
R7121	QRL09J-330	OM R	33Ω 3W J
R7122	QRL09J-330	OM R	33Ω 3W J
R7124	NRS463J-101X	MG R	100Ω 1/16W J

CAPACITOR

C7101	NCB31HK-102X	C CAP.	1000pF 50V K
C7102	QETN1HM-106Z	E CAP.	10μF 50V M
C7103	NCF21HZ-104X	C CAP.	0.1μF 50V Z
C7104	NCB31HK-472X	C CAP.	4700pF 50V K
C7107	QFN32DK-103	M CAP.	0.01μF 200V K
C7108	QFN32DK-103	M CAP.	0.01μF 200V K
C7109	QETN2CM-106Z	E CAP.	10μF 160V M
C7110	QETN2CM-226Z	E CAP.	22μF 160V M
C7111	QETN2CM-226Z	E CAP.	22μF 160V M
C7112	QFN31HJ-222Z	M CAP.	2200pF 50V J
C7113	QFN31HJ-222Z	M CAP.	2200pF 50V J
C7116	QCS32HJ-330Z	C CAP.	33pF 500V J
C7117	QFN32DK-103	M CAP.	0.01μF 200V K
C7118	QFN32DK-103	M CAP.	0.01μF 200V K
C7119	QCB32HK-103	C CAP.	0.01μF 500V K
C7120	QCB32HK-102Z	C CAP.	1000pF 500V K

DIODE

D7101	1SS355-X	SI DIODE
D7102	RH15-T3	SI DIODE
D7103	RH15-T3	SI DIODE

TRANSISTOR

Q7101	2SC1906-T	SI TRANSISTOR
Q7102	2SA1005/MLK/-T	SI TRANSISTOR
Q7103	2SC1959/Y/-T	SI TRANSISTOR
Q7104	2SA562TM/Y/-T	SI TRANSISTOR
Q7105	2SJ403	F.E.T.
Q7106	IRF1620G	F.E.T.

OTHERS

K7101	CE41492-001Z	CHOKE COIL
LC7101	NQR0169-001X	EMI FILTER

B VM P.W. BOARD ASS'Y (SSB-7353A-M2)

Symbol No.	Part No.	Part Name	Description
RESISTOR			
R7101	NRS463J-101X	MG R	100Ω 1/16W J
R7102	NRS463J-223X	MG R	22kΩ 1/16W J
R7103	NRS463J-332X	MG R	3.3kΩ 1/16W J
R7104	NRS463J-332X	MG R	3.3kΩ 1/16W J
R7105	NRS463J-391X	MG R	390Ω 1/16W J
R7106	NRS463J-471X	MG R	470Ω 1/16W J
R7107	NRS463J-392X	MG R	3.9kΩ 1/16W J
Δ R7110	QRJ146J-182X	C R	1.8kΩ 1/4W J
R7111	NRS463J-104X	MG R	100kΩ 1/16W J
R7112	NRS463J-104X	MG R	100kΩ 1/16W J
Δ R7113	QRJ146J-182X	C R	1.8kΩ 1/4W J
Δ R7114	QRJ146J-470X	UNF C R	47Ω 1/4W J
Δ R7115	QRJ146J-470X	UNF C R	47Ω 1/4W J
R7116	QRG01GJ-150	OM R	15Ω 1W J
R7117	NRS463J-104X	MG R	100kΩ 1/16W J
R7118	NRS463J-104X	MG R	100kΩ 1/16W J
R7119	QRG01GJ-180	OM R	18Ω 1W J
R7120	QRL09J-330	OM R	33Ω 3W J
R7121	QRL09J-330	OM R	33Ω 3W J
R7122	QRL09J-330	OM R	33Ω 3W J
R7124	NRS463J-101X	MG R	100Ω 1/16W J
CAPACITOR			
C7101	NCB31HK-102X	C CAP.	1000pF 50V K
C7102	QETN1HM-106Z	E CAP.	10μF 50V M
C7103	NCF21HZ-104X	C CAP.	0.1μF 50V Z
C7104	NCB31HK-472X	C CAP.	4700pF 50V K
C7107	QFN32DK-103	M CAP.	0.01μF 200V K
C7108	QFN32DK-103	M CAP.	0.01μF 200V K
C7109	QETN2CM-106Z	E CAP.	10μF 160V M
C7110	QETN2CM-226Z	E CAP.	22μF 160V M
C7111	QETN2CM-226Z	E CAP.	22μF 160V M
C7112	QFN31HJ-222Z	M CAP.	2200pF 50V J
C7113	QFN31HJ-222Z	M CAP.	2200pF 50V J
C7116	QCS32HJ-330Z	C CAP.	33pF 500V J
C7117	QFN32DK-103	M CAP.	0.01μF 200V K
C7118	QFN32DK-103	M CAP.	0.01μF 200V K
C7119	QCB32HK-103	C CAP.	0.01μF 500V K
C7120	QCB32HK-102Z	C CAP.	1000pF 500V K
DIODE			
D7101	1SS355-X	SI DIODE	
D7102	RH1S-T3	SI DIODE	
D7103	RH1S-T3	SI DIODE	
TRANSISTOR			
Q7101	2SC1906-T	SI TRANSISTOR	
Q7102	2SA1005/MLK/-T	SI TRANSISTOR	
Q7103	2SC1959/Y/-T	SI TRANSISTOR	
Q7104	2SA562TH/Y/-T	SI TRANSISTOR	
Q7105	2SJ403	F.E.T.	
Q7106	IRF1620G	F.E.T.	
OTHERS			
K7101	CE41492-001Z	CHOKE COIL	
LC7101	NQR0169-001X	EMI FILTER	

REMOCON SENSOR P.W. BOARD ASS'Y

(SSB-8053A-M2)

Symbol No.	Part No.	Part Name	Description
RESISTOR			
R8001	NRS463J-102X	MG R	1kΩ 1/16W J
CAPACITOR			
C8001	NCB31CK-104X	C CAP.	0.1μF 16V K
C8002	QETN1EM-476Z	E CAP.	47μF 25V M
DIODE			
D8001	MA3068/M/-X	ZENER DIODE	
IC			
IC8001	GP10281Q	IR DETECT UNIT	

LINE FILTER P.W. BOARD ASS'Y (SSB-9053A-M2)

Symbol No.	Part No.	Part Name	Description
RESISTOR			
Δ R9901	QRZ9041-275	C R	2.7MΩ 1/2W K
R9911	QRE121J-5R6Y	C R	5.6Ω 1/2W J
CAPACITOR			
Δ C9901	QFZ9072-104	MF CAP.	0.1μFAC275V K
Δ C9902	QFZ9072-104	MF CAP.	0.1μFAC275V K
Δ C9903	QFZ9072-104	MF CAP.	0.1μFAC275V K
C9911	QETN1CM-108Z	E CAP.	1000μF 16V M
C9921	QETM1HM-108	E CAP.	1000μF 50V M
TRANSF			
Δ T9911	QQT0361-001	POWER TRANSF.	
DIODE			
D9911	1SR35-400A-T2	SI DIODE	
D9912	1SR35-400A-T2	SI DIODE	
D9913	1SR35-400A-T2	SI DIODE	
D9914	1SR35-400A-T2	SI DIODE	
D9921	1SR35-400A-T2	SI DIODE	
OTHERS			
Δ CN90PW	QMPD200-200-JC	POWER CORD	or QMPD390-200-JS
Δ F9901	QMF61U1-7R0-S	FUSE	7.0A
Δ LF9901	QQR0972-002	LINE FILTER	
Δ LF9902	QQR0972-002	LINE FILTER	
Δ LF9903	QQR1281-001	LINE FILTER	
Δ VA9901	ERZV10V621CS	VARISTOR	

CENTER SPEAKER P.W. BOARD ASS'Y

(SSB0A053A-M2)

Symbol No.	Part No.	Part Name	Description
OTHERS			
J0001	CENT019-001	SP TERMINAL	

DEF. OSC. P.W. BOARD ASS'Y (SSB0H053A-M2)

△ Symbol No.	Part No.	Part Name	Description
RESISTOR			
R0101	NRSA63J-102X	MG R	1kΩ 1/16W J
R0108	NRSA63J-681X	MG R	680Ω 1/16W J
R0104	NRSA63J-103X	MG R	10kΩ 1/16W J
R0105	NRSA63J-473X	MG R	47kΩ 1/16W J
R0106	NRSA63J-123X	MG R	12kΩ 1/16W J
R0107	NRSA63J-103X	MG R	10kΩ 1/16W J
R0109	NRSA63J-682X	MG R	6.8kΩ 1/16W J
R0110	NRSA63J-223X	MG R	22kΩ 1/16W J
R0111	NRVA63D-153X	MF R	15kΩ 1/16W D
R0112	NRVA63D-182X	MF R	1.8kΩ 1/16W D
R0113	NRVA63D-123X	MF R	12kΩ 1/16W D
R0114	NRSA63J-222X	MG R	2.2kΩ 1/16W J
R0116	NRVA63D-182X	MF R	1.8kΩ 1/16W D
R0117	NRSA63J-332X	MG R	3.3kΩ 1/16W J
R0120	NRSA63J-183X	MG R	18kΩ 1/16W J
R0121	NRSA63J-152X	MG R	1.5kΩ 1/16W J
R0122	QRG01GJ-470	OM R	47Ω 1W J
△ R0123	QRK126J-101X	C R	100Ω 1/2W J
R0126	NRSA63J-103X	MG R	10kΩ 1/16W J
R0127	NRSA63J-103X	MG R	10kΩ 1/16W J
R0129	NRVA63D-183X	MF R	18kΩ 1/16W D
R0131	NRSA63J-102X	MG R	1kΩ 1/16W J
R0133	NRSA63J-151X	MG R	150Ω 1/16W J
R0134	NRSA63J-334X	MG R	330kΩ 1/16W J
R0137	NRSA63J-103X	MG R	10kΩ 1/16W J
R0139	NRSA63J-223X	MG R	22kΩ 1/16W J
R0140	NRSA63J-103X	MG R	10kΩ 1/16W J
R0141	NRSA63J-472X	MG R	4.7kΩ 1/16W J
R0142	NRSA63J-103X	MG R	10kΩ 1/16W J
R0143	NRSA63J-471X	MG R	470Ω 1/16W J
R0161	NRSA63J-221X	MG R	220Ω 1/16W J
R0162	NRSA63J-221X	MG R	220Ω 1/16W J
R0163	NRSA63J-101X	MG R	100Ω 1/16W J
R0164	NRSA63J-101X	MG R	100Ω 1/16W J
R0167	NRSA63J-472X	MG R	4.7kΩ 1/16W J
R0168	NRSA63J-472X	MG R	4.7kΩ 1/16W J
R0169	NRSA63J-332X	MG R	3.3kΩ 1/16W J
R0170	NRSA63J-472X	MG R	4.7kΩ 1/16W J
R0171	NRSA63J-223X	MG R	22kΩ 1/16W J
R0172	NRSA63J-473X	MG R	47kΩ 1/16W J
R0174	NRSA63J-102X	MG R	1kΩ 1/16W J
R0175	NRSA63J-102X	MG R	1kΩ 1/16W J
R0176	NRSA63J-222X	MG R	2.2kΩ 1/16W J
R0177	NRSA63J-123X	MG R	12kΩ 1/16W J
R0178	NRSA63J-821X	MG R	820Ω 1/16W J
R0179	NRVA63D-562X	MF R	5.6kΩ 1/16W D
R0180	NRVA63D-152X	MF R	1.5kΩ 1/16W D
R0182	NRSA63J-102X	MG R	1kΩ 1/16W J
R0183	NRSA63J-102X	MG R	1kΩ 1/16W J
R0184	NRVA63D-473X	MF R	47kΩ 1/16W D
R0185	NRVA63D-103X	MF R	10kΩ 1/16W D
R0186	NRSA63J-103X	MG R	10kΩ 1/16W J
R0187	NRSA63J-472X	MG R	4.7kΩ 1/16W J
R0188	NRVA63D-101X	MF R	100Ω 1/16W D
R0189	NRSA63J-0R0X	MG R	0.0Ω 1/16W J
R0190	NRSA63J-181X	MG R	180Ω 1/16W J
R0216	NRSA63J-221X	MG R	220Ω 1/16W J
R0217	NRSA63J-221X	MG R	220Ω 1/16W J
R0223	NRSA63J-101X	MG R	100Ω 1/16W J
R0224	NRSA63J-101X	MG R	100Ω 1/16W J
R0226	NRSA63J-101X	MG R	100Ω 1/16W J
R0227	NRSA63J-102X	MG R	1kΩ 1/16W J
R0230	NRSA63J-223X	MG R	22kΩ 1/16W J
R0321	NRSA63J-0R0X	MG R	0.0Ω 1/16W J
R0326	NRSA63J-224X	MG R	220kΩ 1/16W J
R0327	NRSA63J-224X	MG R	220kΩ 1/16W J
R0328	NRSA63J-563X	MG R	56kΩ 1/16W J
R0329	NRSA63J-224X	MG R	220kΩ 1/16W J
R0330	NRSA63J-683X	MG R	68kΩ 1/16W J
R0751	NRSA63J-183X	MG R	18kΩ 1/16W J
R0752	NRSA63J-103X	MG R	10kΩ 1/16W J
R0753	NRSA63J-822X	MG R	8.2kΩ 1/16W J

△ Symbol No.	Part No.	Part Name	Description
RESISTOR			
R0754	NRSA63J-183X	MG R	18kΩ 1/16W J
R0755	NRSA63J-183X	MG R	18kΩ 1/16W J
R0756	NRSA63J-392X	MG R	3.9kΩ 1/16W J
R0757	NRSA63J-152X	MG R	1.5kΩ 1/16W J
R0761	QRE121J-184Y	C R	180kΩ 1/2W J
R0762	QRE121J-184Y	C R	180kΩ 1/2W J
R0763	QRE121J-184Y	C R	180kΩ 1/2W J
R0764	QRE121J-184Y	C R	180kΩ 1/2W J
R0765	QRE121J-184Y	C R	180kΩ 1/2W J
CAPACITOR			
C0102	NCB31HK-103X	C CAP.	0.01μF 50V K
C0103	NCB31HK-103X	C CAP.	0.01μF 50V K
C0104	NDC31HJ-561X	C CAP.	560pF 50V J
C0106	NDC31HJ-102X	C CAP.	1000pF 50V J
C0107	NDC31HJ-122X	C CAP.	1200pF 50V J
C0108	QETN1HM-475Z	E CAP.	4.7μF 50V M
C0109	NCB31HK-103X	C CAP.	0.01μF 50V K
C0110	NCB31HK-102X	C CAP.	1000pF 50V K
C0111	QETN1HM-225Z	E CAP.	2.2μF 50V M
C0112	QETN1HM-225Z	E CAP.	2.2μF 50V M
C0113	NDC31HJ-122X	C CAP.	1200pF 50V J
C0114	NDC31HJ-102X	C CAP.	1000pF 50V J
C0115	NDC31HJ-102X	C CAP.	1000pF 50V J
C0116	NCB31HK-103X	C CAP.	0.01μF 50V K
C0117	QTMN1CM-477Z	E CAP.	470μF 16V M
C0118	NCB31HK-103X	C CAP.	0.01μF 50V K
C0119	QETN1EM-476Z	E CAP.	47μF 25V M
C0120	QETN1EM-476Z	E CAP.	47μF 25V M
C0121	QETN1CM-107Z	E CAP.	100μF 16V M
C0122	NCB31HK-103X	C CAP.	0.01μF 50V K
C0123	NCB31HK-103X	C CAP.	0.01μF 50V K
C0124	NCB31HK-103X	C CAP.	0.01μF 50V K
C0131	NDC31HJ-101X	C CAP.	100pF 50V J
C0132	QETN1HM-105Z	E CAP.	1μF 50V M
C0133	NCB21EK-124X	C CAP.	0.12μF 25V K
C0134	NCB31EK-273X	C CAP.	0.027μF 25V K
C0135	NDC31HJ-102X	C CAP.	1000pF 50V J
C0136	NDC31HJ-102X	C CAP.	1000pF 50V J
C0137	NDC31HJ-102X	C CAP.	1000pF 50V J
C0138	NDC31HJ-151X	C CAP.	150pF 50V J
C0161	QETN1CM-108Z	E CAP.	1000μF 16V M
C0162	NCB31HK-103X	C CAP.	0.01μF 50V K
C0163	QETN1AM-477Z	E CAP.	470μF 10V M
C0164	NCB31HK-103X	C CAP.	0.01μF 50V K
C0165	NCB31CK-104X	C CAP.	0.1μF 16V K
C0166	QETN1HM-106Z	E CAP.	10μF 50V M
C0167	NCB31HK-332X	C CAP.	3300pF 50V K
C0168	NCB31HK-103X	C CAP.	0.01μF 50V K
C0169	NCB31CK-104X	C CAP.	0.1μF 16V K
C0170	NCB31HK-103X	C CAP.	0.01μF 50V K
C0171	QFV71HJ-184Z	MF CAP.	0.18μF 50V J
C0172	QFV71HJ-394Z	MF CAP.	0.39μF 50V J
C0173	NCB31HK-153X	C CAP.	0.015μF 50V K
C0174	NCB31HK-272X	C CAP.	2700pF 50V K
C0175	NCB31HK-152X	C CAP.	1500pF 50V K
C0176	QFV71HJ-184Z	MF CAP.	0.18μF 50V J
C0178	NCB31CK-104X	C CAP.	0.1μF 16V K
C0179	NCB31CK-104X	C CAP.	0.1μF 16V K
C0180	NCB31CK-104X	C CAP.	0.1μF 16V K
C0181	NCB31CK-104X	C CAP.	0.1μF 16V K
C0182	NCB31CK-104X	C CAP.	0.1μF 16V K
C0212	QETN1HM-106Z	E CAP.	10μF 50V M
C0221	QETN1HM-105Z	E CAP.	1μF 50V M
C0321	NCB31HK-102X	C CAP.	1000pF 50V K
C0751	QFLC1HJ-563Z	M CAP.	0.056μF 50V J
C0752	QETN1VM-476Z	E CAP.	47μF 35V M
△ C0753	QFZ0200-153	MPP CAP.	0.015μF 1.5kVH±3%
△ C0761	QFZ0122-682	MPP CAP.	6800pF 1.8kVH±3%
C0762	QCZ0122-471	C CAP.	470pF 2kV K
C0763	QCZ0122-471	C CAP.	470pF 2kV K

AV JACK P.W. BOARD ASS'Y (SSB0J053A-M2)

Symbol No.	Part No.	Part Name	Description
COIL			
L0101	QQL01BK-470Z	COIL	47 μ H K
L0103	NQL092K-100X	COIL	10 μ H
L0104	NQL092K-100X	COIL	10 μ H
L0105	QQL01BK-101Z	COIL	100 μ H K
DIODE			
D0164	1SS355-X	SI. DIODE	
D0165	NRS463J-OROX	MG R	0.002 1/16W J
D0221	1SS355-X	SI. DIODE	
D0321	1SS355-X	SI. DIODE	
D0751	ES1F-LFG2	SI. DIODE	
D0752	ES1F-LFG2	SI. DIODE	
TRANSISTOR			
Q0101	2SD601A/QR/-X	SI. TRANSISTOR	
Q0102	2SD601A/QR/-X	SI. TRANSISTOR	
Q0131	2SD601A/QR/-X	SI. TRANSISTOR	
Q0132	2SD601A/QR/-X	SI. TRANSISTOR	
Q0162	2SD601A/QR/-X	SI. TRANSISTOR	
Q0167	2SD601A/QR/-X	SI. TRANSISTOR	
Q0168	2SD601A/QR/-X	SI. TRANSISTOR	
Q0751	2SD601A/QR/-X	SI. TRANSISTOR	
Q0752	2SD601A/QR/-X	SI. TRANSISTOR	
Q0753	2SC4632	POWER TRANSISTOR	
IC			
IC0101	LA7860M-X	I. C.	
IC0102	BA12FP-X	I. C.	
IC0161	AN5441SA-W	I. C.	
IC0162	BA10893F-XE	I. C.	
IC0212	CXA1875AM-X	I. C.	

Symbol No.	Part No.	Part Name	Description
RESISTOR			
R0101	NRS463J-333X	MG R	330 Ω 1/16W J
R0102	NRS463J-750X	MG R	75 Ω 1/16W J
R0103	NRS463J-750X	MG R	75 Ω 1/16W J
R0104	NRS463J-750X	MG R	75 Ω 1/16W J
R0105	NRS463J-224X	MG R	220 Ω 1/16W J
R0106	NRS463J-224X	MG R	220 Ω 1/16W J
R0107	NRS463J-OROX	MG R	0.002 1/16W J
R0108	NRS463J-OROX	MG R	0.002 1/16W J
R0125	NRS463J-750X	MG R	75 Ω 1/16W J
R0126	NRS463J-224X	MG R	220 Ω 1/16W J
R0127	NRS463J-224X	MG R	220 Ω 1/16W J
R0131	NRS463J-OROX	MG R	0.002 1/16W J
R0132	NRS463J-OROX	MG R	0.002 1/16W J
R0133	NRS463J-OROX	MG R	0.002 1/16W J
R0141	NRS463J-333X	MG R	330 Ω 1/16W J
R0142	NRS463J-750X	MG R	75 Ω 1/16W J
R0143	NRS463J-750X	MG R	75 Ω 1/16W J
R0144	NRS463J-750X	MG R	75 Ω 1/16W J
R0145	NRS463J-224X	MG R	220 Ω 1/16W J
R0146	NRS463J-224X	MG R	220 Ω 1/16W J
R0147	NRS463J-OROX	MG R	0.002 1/16W J
R0148	NRS463J-OROX	MG R	0.002 1/16W J
R0201	NRS463J-OROX	MG R	0.002 1/16W J
R0202	NRS463J-OROX	MG R	0.002 1/16W J
R0203	NRS463J-OROX	MG R	0.002 1/16W J
R0204	NRS463J-OROX	MG R	0.002 1/16W J
R0205	NRS463J-OROX	MG R	0.002 1/16W J
R0206	NRS463J-OROX	MG R	0.002 1/16W J
R0207	NRS463J-OROX	MG R	0.002 1/16W J
R0208	NRS463J-OROX	MG R	0.002 1/16W J
R0211	NRS463J-151X	MG R	150 Ω 1/16W J
R0213	NRS463J-151X	MG R	150 Ω 1/16W J
R0215	NRS463J-OROX	MG R	0.002 1/16W J
R0216	NRS463J-OROX	MG R	0.002 1/16W J
R0217	NRS463J-OROX	MG R	0.002 1/16W J
R0218	NRS463J-OROX	MG R	0.002 1/16W J
R0219	NRS463J-OROX	MG R	0.002 1/16W J
R0220	NRS463J-151X	MG R	150 Ω 1/16W J
R0322	NRS463J-750X	MG R	75 Ω 1/16W J
R0325	NRS463J-750X	MG R	75 Ω 1/16W J
R0328	NRS463J-750X	MG R	75 Ω 1/16W J
R0342	NRS463J-750X	MG R	75 Ω 1/16W J
R0345	NRS463J-750X	MG R	75 Ω 1/16W J
R0348	NRS463J-750X	MG R	75 Ω 1/16W J
R0401	NRS463J-OROX	MG R	0.002 1/16W J
R0402	NRS463J-OROX	MG R	0.002 1/16W J
R0403	NRS463J-OROX	MG R	0.002 1/16W J
R0404	NRS463J-OROX	MG R	0.002 1/16W J
R0405	NRS463J-OROX	MG R	0.002 1/16W J
R0409	NRS463J-OROX	MG R	0.002 1/16W J
R0410	NRS463J-OROX	MG R	0.002 1/16W J
R0411	NRS463J-OROX	MG R	0.002 1/16W J
R0412	NRS463J-OROX	MG R	0.002 1/16W J
R0436	NRS463J-OROX	MG R	0.002 1/16W J
R0438	NRS463J-OROX	MG R	0.002 1/16W J
R0439	NRS463J-OROX	MG R	0.002 1/16W J
R0440	NRS463J-OROX	MG R	0.002 1/16W J
R0441	NRS463J-OROX	MG R	0.002 1/16W J
R0471	NRS402J-221X	MG R	220 Ω 1/10W J
R0473	NRS402J-121X	MG R	120 Ω 1/10W J
R0475	NRS402J-221X	MG R	220 Ω 1/10W J
R0477	NRS402J-121X	MG R	120 Ω 1/10W J
R0481	NRS402J-101X	MG R	100 Ω 1/10W J
R0482	NRS402J-101X	MG R	100 Ω 1/10W J
R0601	NRS402J-OROX	MG R	0.002 1/10W J
R0602	NRS402J-103X	MG R	100 Ω 1/10W J
R0603	NRS402J-473X	MG R	470 Ω 1/10W J
R0604	NRS402J-393X	MG R	390 Ω 1/10W J
R0605	NRS402J-104X	MG R	100 Ω 1/10W J
R0607	NRS402J-333X	MG R	330 Ω 1/10W J
R0608	NRS402J-103X	MG R	100 Ω 1/10W J
R0609	NRS402J-OROX	MG R	0.002 1/10W J

Symbol No.	Part No.	Part Name	Description
CAPACITOR			
C0101	NCB11CK-105X	C CAP.	1µF 16V K
C0102	NCB31HK-103X	C CAP.	0.01µF 50V K
C0103	QETN1HM-106Z	E CAP.	10µF 50V M
C0104	QETN1HM-106Z	E CAP.	10µF 50V M
C0105	QETN1HM-105Z	E CAP.	1µF 50V M
C0106	QETN1HM-105Z	E CAP.	1µF 50V M
C0126	QETN1HM-106Z	E CAP.	10µF 50V M
C0127	QETN1HM-105Z	E CAP.	1µF 50V M
C0128	QETN1HM-105Z	E CAP.	1µF 50V M
C0141	NCB11CK-105X	C CAP.	1µF 16V K
C0142	NCB31HK-103X	C CAP.	0.01µF 50V K
C0143	QETN1HM-106Z	E CAP.	10µF 50V M
C0144	QETN1HM-106Z	E CAP.	10µF 50V M
C0145	QETN1HM-105Z	E CAP.	1µF 50V M
C0146	QETN1HM-105Z	E CAP.	1µF 50V M
C0321	QETN1EM-476Z	E CAP.	47µF 25V M
C0322	QETN1EM-476Z	E CAP.	47µF 25V M
C0323	QETN1EM-476Z	E CAP.	47µF 25V M
C0341	QETN1HM-105Z	E CAP.	1µF 50V M
C0342	QETN1HM-105Z	E CAP.	1µF 50V M
C0343	QETN1HM-105Z	E CAP.	1µF 50V M
C0421	NCF11EZ-105X	C CAP.	1µF 25V Z
C0431	NDC21HJ-221X	C CAP.	220pF 50V J
C0432	QENCLHM-106Z	BP E CAP.	10µF 50V M
C0433	QENCLHM-106Z	BP E CAP.	10µF 50V M
C0434	NDC21HJ-221X	C CAP.	220pF 50V J
C0435	QENCLHM-106Z	BP E CAP.	10µF 50V M
C0436	QENCLHM-106Z	BP E CAP.	10µF 50V M
C0601	NDC21HJ-680X	C CAP.	68pF 50V J
C0602	QENCLHM-105Z	E CAP.	1µF 50V M
C0603	QETN1EM-476Z	E CAP.	47µF 25V M
C0604	QETN1EM-476Z	E CAP.	47µF 25V M
C0605	QETN1HM-474Z	E CAP.	0.47µF 50V M
C0606	NCB21HK-222X	C CAP.	2200pF 50V K
C0607	NCB21HK-472X	C CAP.	4700pF 50V K
C0608	NCB21HK-473X	C CAP.	0.047µF 50V K
C0610	QETN1HM-474Z	E CAP.	0.47µF 50V M
C0612	QETN1HM-475Z	E CAP.	4.7µF 50V M
C0613	NDC21HJ-681X	C CAP.	680pF 50V J
C0614	NCB21HK-153X	C CAP.	0.015µF 50V K
C0615	NDC21HJ-102X	C CAP.	1000pF 50V J
C0616	NDC21HJ-821X	C CAP.	820pF 50V J
C0617	NDC21HJ-680X	C CAP.	68pF 50V J
C0618	NDC21HJ-121X	C CAP.	120pF 50V J
C0619	NCF11EZ-105X	C CAP.	1µF 25V Z
C0620	NCF11EZ-105X	C CAP.	1µF 25V Z
C0621	NDC21HJ-100X	C CAP.	10pF 50V J
C0622	NDC21HJ-331X	C CAP.	330pF 50V J

COIL

L0431	QQL25CK-100Z	COIL	10µH K
-------	--------------	------	--------

DIODE

D0101	UDZS10B-X	ZENER DIODE
D0141	UDZS10B-X	ZENER DIODE
D0201	UDZS10B-X	ZENER DIODE
D0202	UDZS10B-X	ZENER DIODE
D0203	UDZS10B-X	ZENER DIODE
D0204	UDZS10B-X	ZENER DIODE
D0207	UDZS10B-X	ZENER DIODE
D0209	UDZS10B-X	ZENER DIODE
D0210	UDZS10B-X	ZENER DIODE
D0211	UDZS10B-X	ZENER DIODE
D0212	UDZS10B-X	ZENER DIODE
D0213	UDZS10B-X	ZENER DIODE
D0215	UDZS10B-X	ZENER DIODE
D0216	UDZS10B-X	ZENER DIODE
D0217	UDZS10B-X	ZENER DIODE
D0218	UDZS10B-X	ZENER DIODE
D0219	UDZS10B-X	ZENER DIODE
D0220	UDZS10B-X	ZENER DIODE
D0401	UDZS9.1B-X	ZENER DIODE

Symbol No.	Part No.	Part Name	Description
DIODE			
D0402	UDZS9.1B-X	ZENER DIODE	
D0403	UDZS9.1B-X	ZENER DIODE	
D0404	UDZS9.1B-X	ZENER DIODE	
D0405	UDZS9.1B-X	ZENER DIODE	
D0406	UDZS9.1B-X	ZENER DIODE	
D0471	MA153A-X	SI DIODE	
D0473	MA153A-X	SI DIODE	

IC

IC0601	M52001SP	I.C.
--------	----------	------

OTHERS

CN0006	QGB1505K1-40	B TO B CONNECTOR
CN0007	QGB1505K1-25	B TO B CONNECTOR
J0101	QNZ0484-006	AV JACK
J0141	QNZ0484-004	AV JACK
J0321	QNN0463-001	JACK
J0341	QNN0463-001	JACK
LC0321	NQR0169-001X	EMI FILTER
LC0322	NQR0169-001X	EMI FILTER
LC0323	NQR0169-001X	EMI FILTER
LC0341	NQR0169-001X	EMI FILTER
LC0342	NQR0169-001X	EMI FILTER
LC0343	NQR0169-001X	EMI FILTER

FRONT CONTROL P.W. BOARD ASS'Y (SSB0L053A-M2)

△ Symbol No. Part No. Part Name Description

RESISTOR

R0201	NRS463J-472X	MG R	4.7kΩ	1/16W	J
R0202	NRS463J-0R0X	MG R	0.0Ω	1/16W	J
R0203	NRS463J-822X	MG R	8.2kΩ	1/16W	J
R0204	NRS463J-0R0X	MG R	0.0Ω	1/16W	J
R0401	NRS463J-750X	MG R	75Ω	1/16W	J
R0402	NRS463J-224X	MG R	220kΩ	1/16W	J
R0403	NRS463J-224X	MG R	220kΩ	1/16W	J
R0404	NRS463J-750X	MG R	75Ω	1/16W	J
R0405	NRS463J-750X	MG R	75Ω	1/16W	J
R0406	NRS463J-0R0X	MG R	0.0Ω	1/16W	J
R0411	NRS463J-0R0X	MG R	0.0Ω	1/16W	J
R0412	NRS463J-0R0X	MG R	0.0Ω	1/16W	J
R0413	NRS463J-0R0X	MG R	0.0Ω	1/16W	J
R0414	NRS463J-0R0X	MG R	0.0Ω	1/16W	J
R0415	NRS463J-0R0X	MG R	0.0Ω	1/16W	J
R0416	NRS463J-0R0X	MG R	0.0Ω	1/16W	J
R0417	NRS463J-0R0X	MG R	0.0Ω	1/16W	J
R0418	NRS463J-0R0X	MG R	0.0Ω	1/16W	J
R0419	NRS463J-0R0X	MG R	0.0Ω	1/16W	J
R0420	NRS463J-0R0X	MG R	0.0Ω	1/16W	J
R0702	NRS463J-0R0X	MG R	0.0Ω	1/16W	J
R0703	NRS463J-0R0X	MG R	0.0Ω	1/16W	J
R0706	NRS463J-101X	MG R	100Ω	1/16W	J
R0707	NRS463J-103X	MG R	10kΩ	1/16W	J
R0708	NRS463J-333X	MG R	33kΩ	1/16W	J
R0711	NRS463J-102X	MG R	1kΩ	1/16W	J
R0712	NRS463J-333X	MG R	33kΩ	1/16W	J
R0732	NRS463J-333X	MG R	33kΩ	1/16W	J
R0748	NRS463J-562X	MG R	5.6kΩ	1/16W	J
R0749	NRS463J-153X	MG R	15kΩ	1/16W	J
R0750	NRS463J-562X	MG R	5.6kΩ	1/16W	J
R0751	NRS463J-153X	MG R	15kΩ	1/16W	J

CAPACITOR

C0442	QETN1HM-105Z	E CAP.	1μF	50V	M
C0443	QETN1HM-105Z	E CAP.	1μF	50V	M
C0444	QETN1HM-106Z	E CAP.	10μF	50V	M
C0445	QETN1HM-106Z	E CAP.	10μF	50V	M
C0446	QFLCHJ-103Z	M CAP.	0.01μF	50V	J
C0711	QETN1CM-336Z	E CAP.	33μF	16V	M
C0712	NCB31CK-104X	C CAP.	0.1μF	16V	K
C0713	NCB31CK-104X	C CAP.	0.1μF	16V	K

DIODE

D0402	UDZS10B-X	ZENER DIODE
D0403	UDZS10B-X	ZENER DIODE
D0404	UDZS10B-X	ZENER DIODE
D0405	UDZS10B-X	ZENER DIODE
D0406	UDZS10B-X	ZENER DIODE
D0701	SEL15E20C	LED
D0735	UDZS10B-X	ZENER DIODE

TRANSISTOR

Q0201	DTC124EKA-X	DIGI. TRANSISTOR
Q0701	2SC2412K/QR/-X	SI. TRANSISTOR
Q0702	2SC2412K/QR/-X	SI. TRANSISTOR

IC

IC0201	PC123F2	I.C.(PHOTO COUPLER)
IC0702	MM1437AF-X	I.C.

OTHERS

J0401	QNZ0438-001	AV JACK	
S0701	QSW0619-003Z	PUSH SWITCH	POWER
S0702	QSW0619-003Z	PUSH SWITCH	MENU
S0703	QSW0619-003Z	PUSH SWITCH	CH-
S0704	QSW0619-003Z	PUSH SWITCH	CH+
S0705	QSW0619-003Z	PUSH SWITCH	VOL-
S0706	QSW0619-003Z	PUSH SWITCH	VOL+
S0707	QSW0619-003Z	PUSH SWITCH	POWER

RECEIVER P.W. BOARD ASS'Y (SSB0R253A-M2)

△ Symbol No. Part No. Part Name Description

RESISTOR

R0101	NRS463J-103X	MG R	10kΩ	1/16W	J
R0102	NRS463J-103X	MG R	10kΩ	1/16W	J
R0103	NRS463J-333X	MG R	33kΩ	1/16W	J
R0104	NRS463J-103X	MG R	10kΩ	1/16W	J
R0105	NRS463J-0R0X	MG R	0.0Ω	1/16W	J
R0106	NRS463J-0R0X	MG R	0.0Ω	1/16W	J
R0107	NRS463J-0R0X	MG R	0.0Ω	1/16W	J
R0108	NRS463J-473X	MG R	47kΩ	1/16W	J
R0109	NRS463J-0R0X	MG R	0.0Ω	1/16W	J
R0110	NRS463J-0R0X	MG R	0.0Ω	1/16W	J
R0111	NRS463J-101X	MG R	100Ω	1/16W	J
R0113	NRS463J-0R0X	MG R	0.0Ω	1/16W	J
R0125	NRS463J-0R0X	MG R	0.0Ω	1/16W	J
R0126	NRS463J-0R0X	MG R	0.0Ω	1/16W	J
R0201	NRS463J-102X	MG R	1kΩ	1/16W	J
R0202	NRS463J-682X	MG R	6.8kΩ	1/16W	J
R0203	NRS463J-153X	MG R	15kΩ	1/16W	J
R0204	NRS463J-332X	MG R	3.3kΩ	1/16W	J
R0205	NRV402D-153X	MF R	15kΩ	1/10W	D
R0206	NRS463J-333X	MG R	33kΩ	1/16W	J
R0207	NRS463J-683X	MG R	68kΩ	1/16W	J
R0208	NRV402D-152X	MF R	1.5kΩ	1/10W	D
R0209	NRS463J-101X	MG R	100Ω	1/16W	J
R0210	NRS463J-101X	MG R	100Ω	1/16W	J
R0211	NRS463J-563X	MG R	56kΩ	1/16W	J
R0212	NRS463J-562X	MG R	5.6kΩ	1/16W	J
R0213	NRS463J-221X	MG R	22Ω	1/16W	J
R0214	NRS463J-221X	MG R	22Ω	1/16W	J
R0217	NRS463J-0R0X	MG R	0.0Ω	1/16W	J
R0218	NRS463J-0R0X	MG R	0.0Ω	1/16W	J
R0531	NRS463J-221X	MG R	22Ω	1/16W	J
R0532	NRS463J-221X	MG R	22Ω	1/16W	J
R0533	NRS463J-823X	MG R	82kΩ	1/16W	J
R0534	NRS463J-221X	MG R	22Ω	1/16W	J
R0535	NRS463J-221X	MG R	22Ω	1/16W	J
R0536	NRS463J-823X	MG R	82kΩ	1/16W	J
R0537	NRS463J-223X	MG R	22kΩ	1/16W	J
R0538	NRS463J-223X	MG R	22kΩ	1/16W	J
R0539	NRS463J-223X	MG R	22kΩ	1/16W	J
R0540	NRS463J-223X	MG R	22kΩ	1/16W	J
R0543	NRS463J-153X	MG R	15kΩ	1/16W	J
R0551	NRS463J-224X	MG R	220kΩ	1/16W	J
R0552	NRS463J-224X	MG R	220kΩ	1/16W	J
R0631	NRS463J-102X	MG R	1kΩ	1/16W	J
R0632	NRS463J-223X	MG R	22kΩ	1/16W	J
R0633	NRS463J-223X	MG R	22kΩ	1/16W	J
R0634	NRS463J-102X	MG R	1kΩ	1/16W	J
R0635	NRS463J-223X	MG R	22kΩ	1/16W	J
R0636	NRS463J-223X	MG R	22kΩ	1/16W	J
R0637	NRS463J-0R0X	MG R	0.0Ω	1/16W	J
R0640	NRS463J-0R0X	MG R	0.0Ω	1/16W	J
R0641	NRS463J-103X	MG R	10kΩ	1/16W	J
R0651	NRS463J-101X	MG R	100Ω	1/16W	J
R0653	NRS463J-101X	MG R	100Ω	1/16W	J
R0654	NRS463J-103X	MG R	10kΩ	1/16W	J
R0656	NRS463J-101X	MG R	100Ω	1/16W	J
R0657	NRS463J-101X	MG R	100Ω	1/16W	J
R0658	NRS463J-103X	MG R	10kΩ	1/16W	J
R0659	NRS463J-104X	MG R	100kΩ	1/16W	J
R0660	NRS463J-103X	MG R	10kΩ	1/16W	J
R0661	NRS463J-472X	MG R	4.7kΩ	1/16W	J
R0662	NRS463J-562X	MG R	5.6kΩ	1/16W	J
R0663	NRS463J-472X	MG R	4.7kΩ	1/16W	J
R0664	NRS463J-562X	MG R	5.6kΩ	1/16W	J
R0666	NRS463J-0R0X	MG R	0.0Ω	1/16W	J
R0667	NRS463J-0R0X	MG R	0.0Ω	1/16W	J
R0669	NRS463J-0R0X	MG R	0.0Ω	1/16W	J
R0670	NRS463J-0R0X	MG R	0.0Ω	1/16W	J
R0701	NRS463J-102X	MG R	1kΩ	1/16W	J

Symbol No.	Part No.	Part Name	Description
CAPACITOR			
C0102	QETNLCM-477Z	E CAP.	470 μ F 16V M
C0108	QETNLHM-106Z	E CAP.	10 μ F 50V M
C0104	QETNLHM-106Z	E CAP.	10 μ F 50V M
C0201	QETNLHM-105Z	E CAP.	1 μ F 50V M
C0202	NCF31CZ-104X	C CAP.	0.1 μ F 16V Z
C0208	QETNLCM-107Z	E CAP.	100 μ F 16V M
C0204	QETNLEM-476Z	E CAP.	47 μ F 25V M
C0207	QENCLHM-105Z	E CAP.	1 μ F 50V M
C0208	NCB31HK-104X	C CAP.	0.1 μ F 50V K
C0209	QENCLHM-475Z	E CAP.	4.7 μ F 50V M
C0210	NCB31HK-473X	C CAP.	0.047 μ F 50V K
C0211	QETNLHM-474Z	E CAP.	0.47 μ F 50V M
C0212	QETNLHM-225Z	E CAP.	2.2 μ F 50V M
C0213	NCB31HK-104X	C CAP.	0.1 μ F 50V K
C0214	NCB31HK-104X	C CAP.	0.1 μ F 50V K
C0215	QBTCLCK-335Z	TAN.CAP.	3.3 μ F 16V K
C0216	QETNLHM-105Z	E CAP.	1 μ F 50V M
C0217	QBTCLCK-106Z	TAN.CAP.	10 μ F 16V K
C0218	QETNLHM-105Z	E CAP.	1 μ F 50V M
C0219	QETNLHM-105Z	E CAP.	1 μ F 50V M
C0220	QETNLHM-475Z	E CAP.	4.7 μ F 50V M
C0221	QETNLHM-105Z	E CAP.	1 μ F 50V M
C0531	QETNLHM-474Z	E CAP.	0.47 μ F 50V M
C0532	QETNLHM-474Z	E CAP.	0.47 μ F 50V M
C0551	QETNLHM-105Z	E CAP.	1 μ F 50V M
C0552	QETNLHM-105Z	E CAP.	1 μ F 50V M
C0601	QENCLHM-105Z	E CAP.	1 μ F 50V M
C0602	QENCLHM-105Z	E CAP.	1 μ F 50V M
C0605	QETNLHM-225Z	E CAP.	2.2 μ F 50V M
C0606	QETNLHM-225Z	E CAP.	2.2 μ F 50V M
C0607	NCB31HK-104X	C CAP.	0.1 μ F 50V K
C0608	NCB31HK-222X	C CAP.	2200pF 50V K
C0609	NCB31HK-104X	C CAP.	0.1 μ F 50V K
C0610	NCB31HK-222X	C CAP.	2200pF 50V K
C0611	NCB21HK-273X	C CAP.	0.027 μ F 50V K
C0631	QENCLHM-106Z	BP E CAP.	10 μ F 50V M
C0632	QENCLHM-106Z	BP E CAP.	10 μ F 50V M
C0633	QETNLHM-226Z	E CAP.	22 μ F 50V M
C0634	QFLCLHJ-473Z	M CAP.	0.047 μ F 50V J
C0635	QFLCLHJ-333Z	M CAP.	0.033 μ F 50V J
C0636	QFLCLHJ-473Z	M CAP.	0.047 μ F 50V J
C0637	QFLCLHJ-333Z	M CAP.	0.033 μ F 50V J
C0638	QETNLEM-476Z	E CAP.	47 μ F 25V M
C0639	NCF31CZ-104X	C CAP.	0.1 μ F 16V Z
C0640	QETNLHM-106Z	E CAP.	10 μ F 50V M
C0651	NCF31CZ-104X	C CAP.	0.1 μ F 16V Z
C0652	QETNLEM-476Z	E CAP.	47 μ F 25V M
C0661	QEZO206-335Z	E CAP.	3.3 μ F 50V M
C0662	QEZO206-335Z	E CAP.	3.3 μ F 50V M

COIL

L0101	QRN143J-OR0X	C R	0.0 Ω 1/4W J
L0102	QRN143J-OR0X	C R	0.0 Ω 1/4W J

DIODE

D0213	UDZ58.2B-X	ZENER DIODE
D0214	UDZ58.2B-X	ZENER DIODE
D0531	UDZ510B-X	ZENER DIODE
D0532	UDZ510B-X	ZENER DIODE
D0533	MA111-X	SI DIODE
D0534	MA111-X	SI DIODE
D0551	UDZ59.1B-X	ZENER DIODE
D0552	UDZ59.1B-X	ZENER DIODE
D0661	1SS133-T2	SI DIODE
D0662	1SS133-T2	SI DIODE
D0701	UDZ58.2B-X	ZENER DIODE

Symbol No.	Part No.	Part Name	Description
TRANSISTOR			
Q0101	2SC2412K/QR/-X	SI TRANSISTOR	
Q0531	DTC323TK-X	DIGI. TRANSISTOR	
Q0532	DTC323TK-X	DIGI. TRANSISTOR	
Q0533	DTC323TK-X	DIGI. TRANSISTOR	
Q0534	DTC323TK-X	DIGI. TRANSISTOR	
Q0651	2SC2412K/QR/-X	SI TRANSISTOR	
Q0652	2SA1037AK/QR/-X	SI TRANSISTOR	
Q0661	2SC3311A/QR/-T	SI TRANSISTOR	
Q0662	2SC3311A/QR/-T	SI TRANSISTOR	

IC

IC0201	UPC1851BCU	I.C.
IC0631	NJM2150AD	I.C.
IC0651	M6230FP-X	I.C.

OTHERS

CN0005	QGB1505K1-40	B TO B CONNECTOR
J0531	CEMN036-004	PIN JACK
J0701	QNS0001-001	JACK
RY0661	QSK0133-001	RELAY
RY0662	QSK0133-001	RELAY
TU0101	QAU0206-001	TUNER
UD0101	QAU0283-001	RF SPLITTER

CONVERGENCE OSD P.W. BOARD ASS'Y (SSB0T053A-M2)

△ Symbol No.	Part No.	Part Name	Description
RESISTOR			
R0701	NRSA63J-562X	MG R	5.6kΩ 1/16W J
R0702	NRSA63J-471X	MG R	470Ω 1/16W J
R0703	NRSA63J-0R0X	MG R	0.0Ω 1/16W J
R0704	NRSA63J-562X	MG R	5.6kΩ 1/16W J
R0705	NRSA63J-471X	MG R	470Ω 1/16W J
R0706	NRSA63J-0R0X	MG R	0.0Ω 1/16W J
R0707	NRSA63J-0R0X	MG R	0.0Ω 1/16W J
R0708	NRSA63J-471X	MG R	470Ω 1/16W J
R0709	NRSA63J-562X	MG R	5.6kΩ 1/16W J
R0713	NRSA63J-0R0X	MG R	0.0Ω 1/16W J
R0714	NRSA63J-473X	MG R	47kΩ 1/16W J
R0715	NRSA63J-102X	MG R	1kΩ 1/16W J
R0716	NRSA63J-473X	MG R	47kΩ 1/16W J
R0717	NRSA63J-102X	MG R	1kΩ 1/16W J
R0718	NRSA63J-0R0X	MG R	0.0Ω 1/16W J
R0721	NRSA63J-183X	MG R	18kΩ 1/16W J
R0722	NRSA63J-333X	MG R	33kΩ 1/16W J
R0723	NRSA63J-221X	MG R	220Ω 1/16W J
R0724	NRSA63J-221X	MG R	220Ω 1/16W J
R0725	NRSA63J-221X	MG R	220Ω 1/16W J
R0731	NRSA63J-683X	MG R	68kΩ 1/16W J
R0732	NRSA63J-0R0X	MG R	0.0Ω 1/16W J
R0733	NRSA63J-683X	MG R	68kΩ 1/16W J
R0735	NRSA63J-102X	MG R	1kΩ 1/16W J
R0736	NRSA63J-683X	MG R	68kΩ 1/16W J
R0737	NRSA63J-683X	MG R	68kΩ 1/16W J
R0738	NRSA63J-0R0X	MG R	0.0Ω 1/16W J
R0740	NRSA63J-102X	MG R	1kΩ 1/16W J
R0741	NRSA63J-683X	MG R	68kΩ 1/16W J
R0742	NRSA63J-683X	MG R	68kΩ 1/16W J
R0743	NRSA63J-0R0X	MG R	0.0Ω 1/16W J
R0745	NRSA63J-102X	MG R	1kΩ 1/16W J

CAPACITOR

C0701	QETN1HM-106Z	E CAP.	10μF 50V M
C0702	NCF31CZ-104X	C CAP.	0.1μF 16V Z
C0707	NCB11CK-105X	C CAP.	1μF 16V K
C0708	NCB11CK-105X	C CAP.	1μF 16V K
C0709	NCB11CK-105X	C CAP.	1μF 16V K
C0711	NCF31CZ-104X	C CAP.	0.1μF 16V Z
C0714	NDC31HJ-181X	C CAP.	180pF 50V J

COIL

L0701	NQL054J-100X	COIL	10μH
-------	--------------	------	------

TRANSISTOR

Q0701	2SC2412K/QR/-X	SI. TRANSISTOR
Q0702	2SC2412K/QR/-X	SI. TRANSISTOR
Q0703	2SC2412K/QR/-X	SI. TRANSISTOR
Q0704	2SC2412K/QR/-X	SI. TRANSISTOR
Q0705	2SC2412K/QR/-X	SI. TRANSISTOR

I C

IC0701	TC74HC4053AF-XE	I.C.
--------	-----------------	------

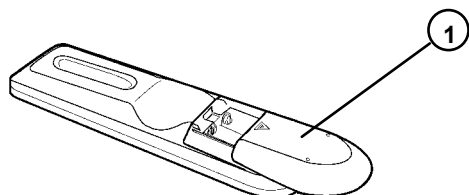
DIGITAL INPUT MODULE P.W. BOARD ASS'Y (SSB-7853A-M2)

△ Symbol No.	Part No.	Part Name	Description
OTHER			
	SSB-7853A-M2	DIGITAL INPUT MODULE	

I-P CONVERT MODULE P.W. BOARD ASS'Y (SSB0D053A-M2)

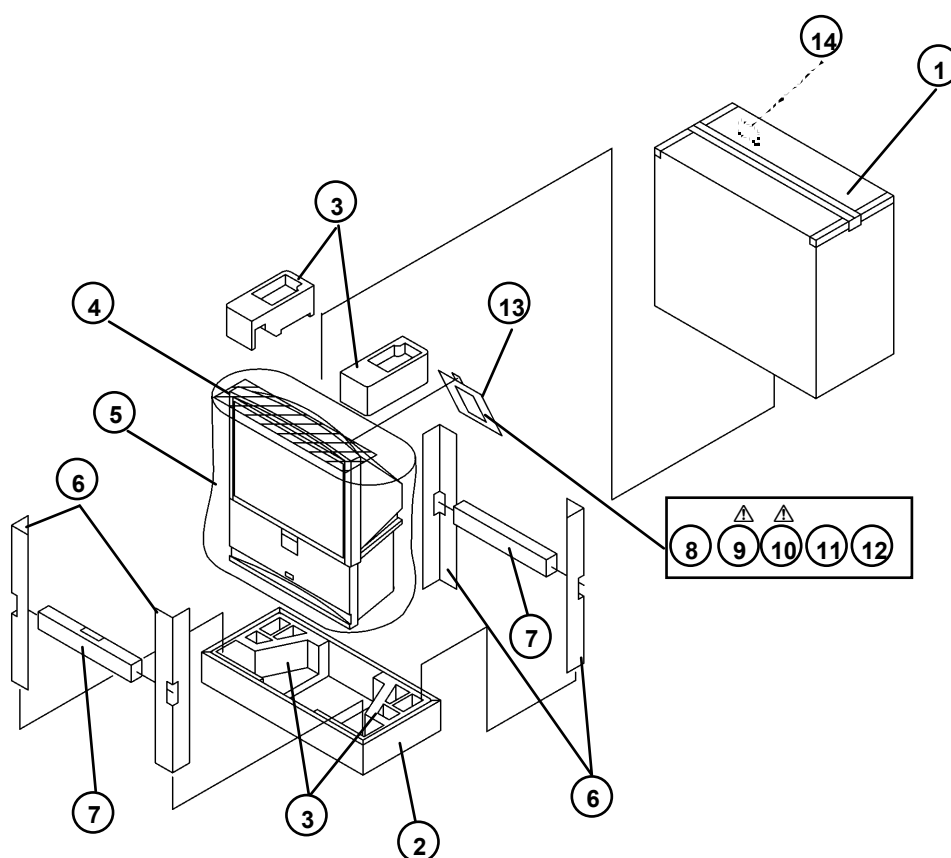
△ Symbol No.	Part No.	Part Name	Description
OTHER			
	SSB0D053A-M2	I-P CONVERT MODULE	

REMOTE CONTROL UNIT PARTS LIST (RM-C322G-1A)



△ Ref.No.	Part No.	Part Name	Description
1	UR52EC1286C	BATTERY COVER	

PACKING



PACKING PARTS LIST

△ Ref.No.	Part No.	Part Name	Description
1	LC11253-002A-A	P.CASE	4pcs in 1set
2	LC31759-002A-A	BOTTOM CASE	
3	LC11410-002A-A	CUSHION ASSY	
4	CP30055-007-A	TOP COVER	
5	CP30056-011-A	POLY BAG	(x4)
6	LC31956-001A-A	PAD	
7	LC32083-001A-A	PROTECT PAD	(x2)
8	RM-C322G-1A	REMOCON UNIT	
△ 9	LCT1237-001A-A	INST BOOK	
△ 10	LCT1238-001A-A	INST BOOK	
11	BT-51028-2Q	REGISTRATION C	
12	BT-52006-1Q	WARRANTY CARD	
13	QPA02503505	POLY BAG	
14	GQ30037-001A-A	CORNER LABEL	

Memo

JVC SERVICE & ENGINEERING COMPANY OF AMERICA

DIVISION OF JVC AMERICAS CORP.

Head office :	1700 Valley Road, Wayne, New Jersey 07470	(973)315-5000
East Coast :	10 New Maple Avenue, Pine Brook, New Jersey 07058	(973)396-1000
Midwest :	705 Enterprise St. Aurora, Illinois 60504	(630)851-7855
West Coast :	5665 Corporate Avenue, Cypress, California 90630	(714)229-8011
Southwest :	10700 Hammerly, Suite 105, Houston, Texas 77043	(713)935-9331
Hawaii :	2969 Mapunapuna Place, Honolulu, Hawaii 96819	(808)833-5828
Southeast :	1500 Lakes Parkway, Lawrenceville, Georgia 30243	(770)339-2582

JVC CANADA INC.

Head office :	21 Finchdene Square Scarborough, Ontario M1X 1A7	(416)293-1311
Vancouver :	13040 Worster Court Richmond B.C. V6V 2B3	(604)270-1311

JVC[®]